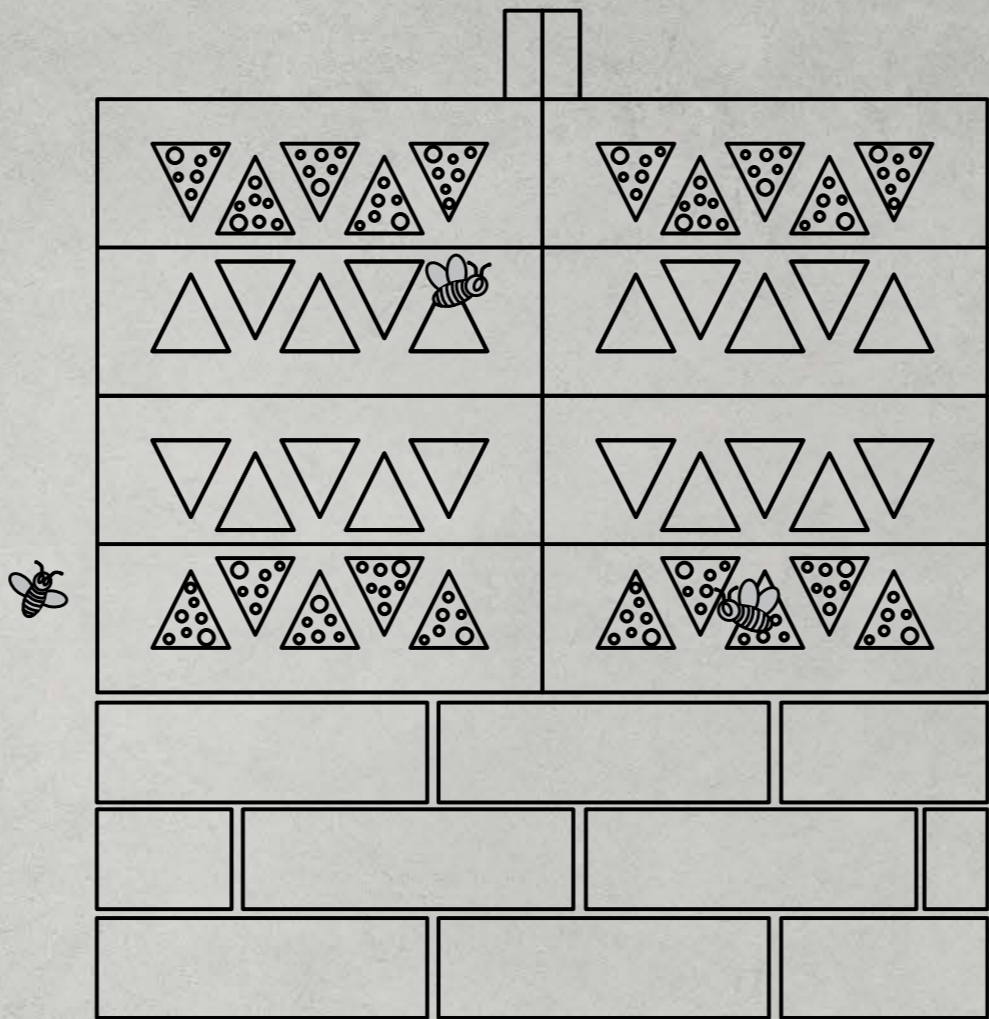
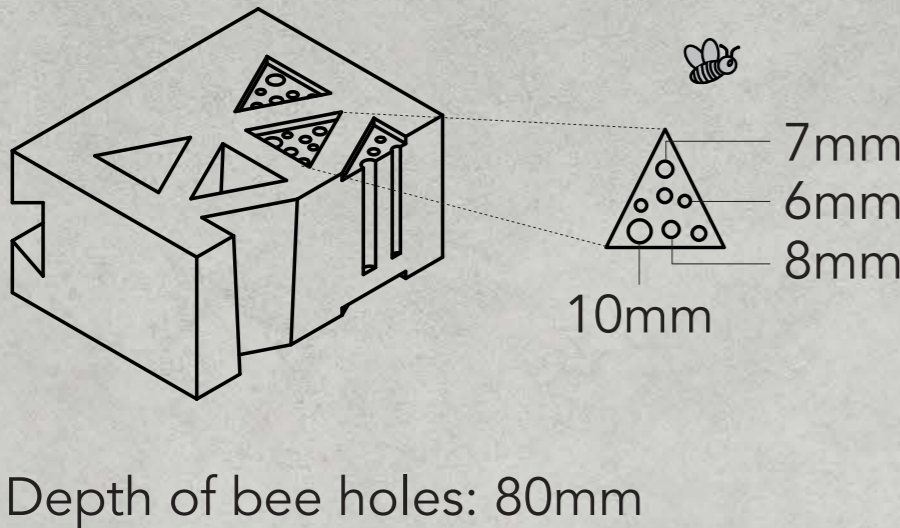
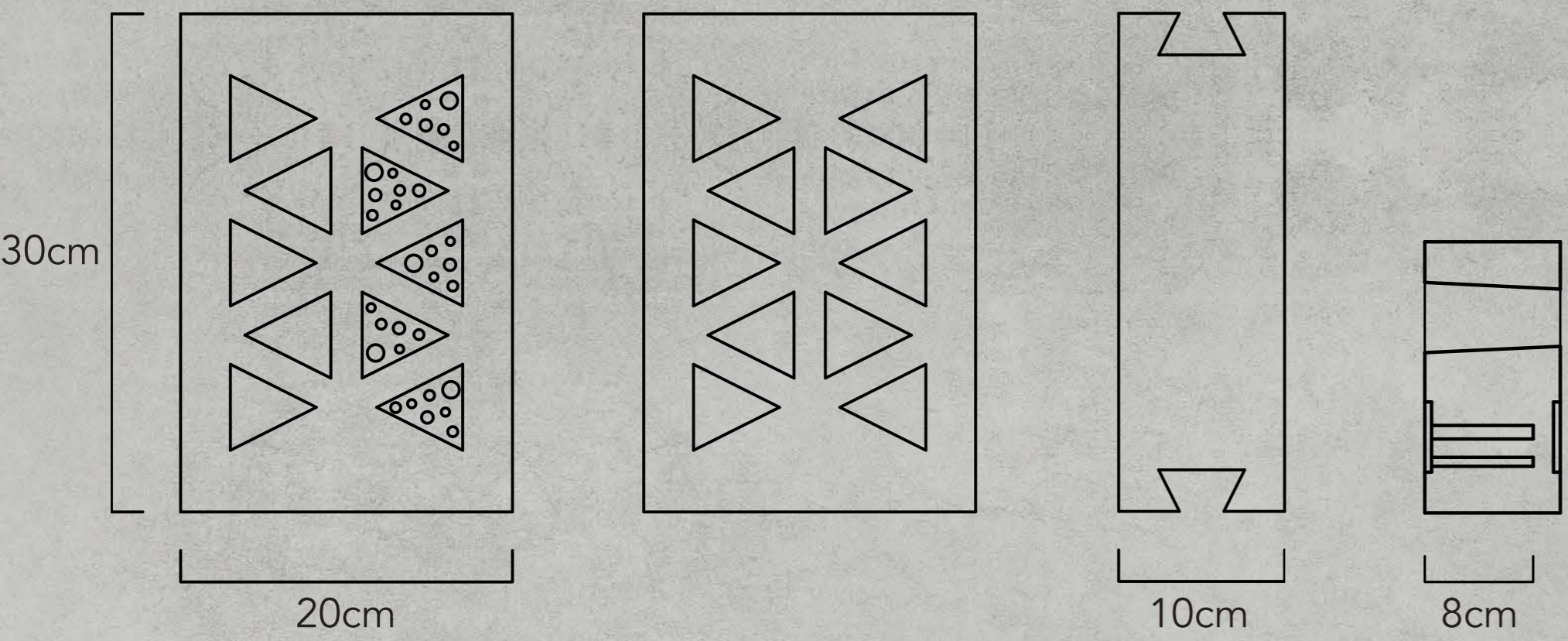


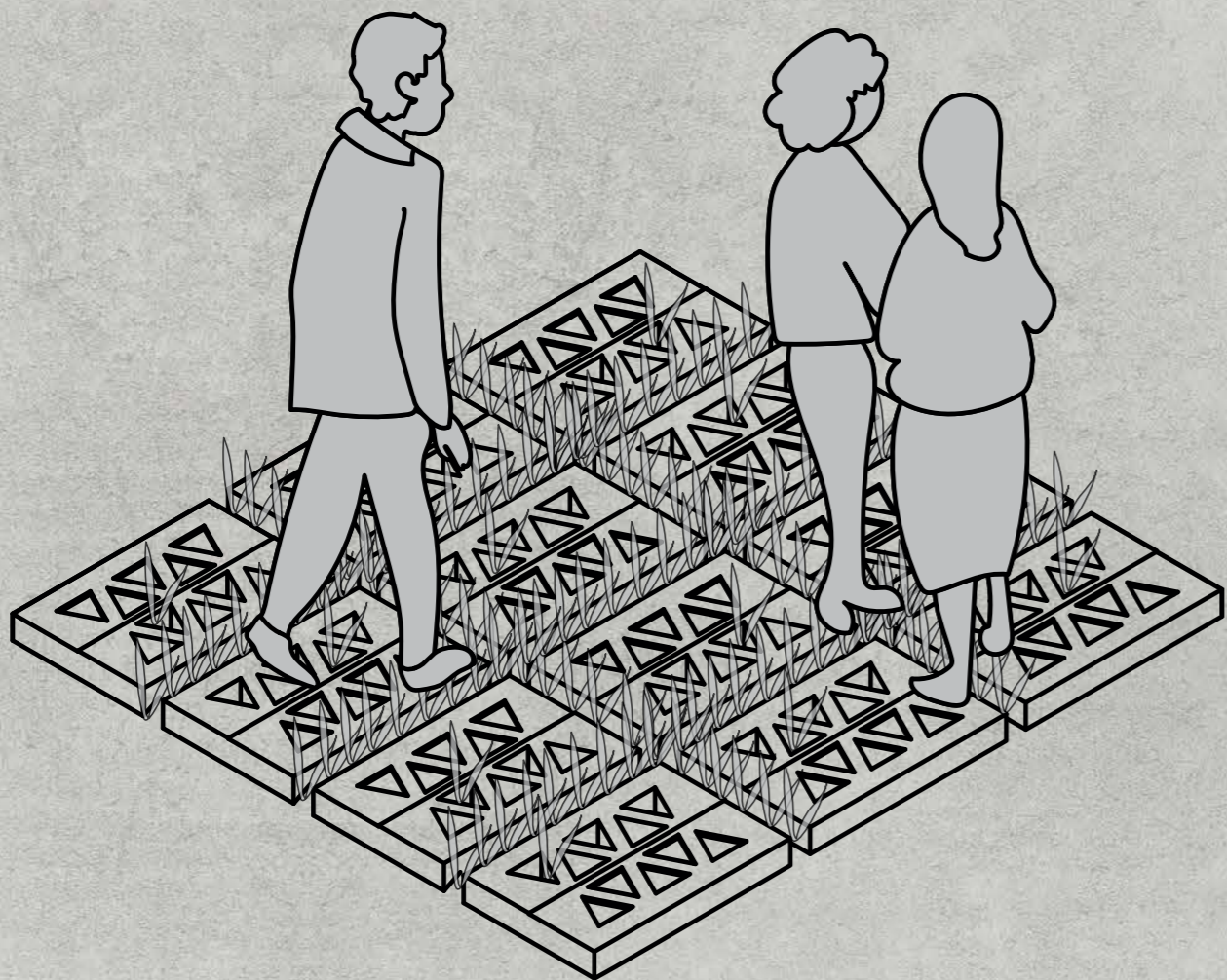
versaTILE

The goal of the versaTILE is to counteract side effects of climate change such as waterlogging due to heavy rainfall and provide a home for solitary bees. The tile can be placed on a façade and function as a bee hotel or even as an element that provides sun shading. Alternatively, it can be used for the pavement of car parking's and pedestrian paths or even as an ornament that the user can place in their balcony or terrace that functions as an independent pot/bee hotel. VersaTILE aims to create one concrete product that has a long-life span, can be used for different purposes and can be 100% reusable and achieve a cyclical life. It does not have irreversible life stages, but it is able to be used freely back and forth in its three different intended functions. To do that it was of extreme importance to create an interlocking system that achieves a dry connection. Therefore, multiple tiles can be assembled easily in a modular way.

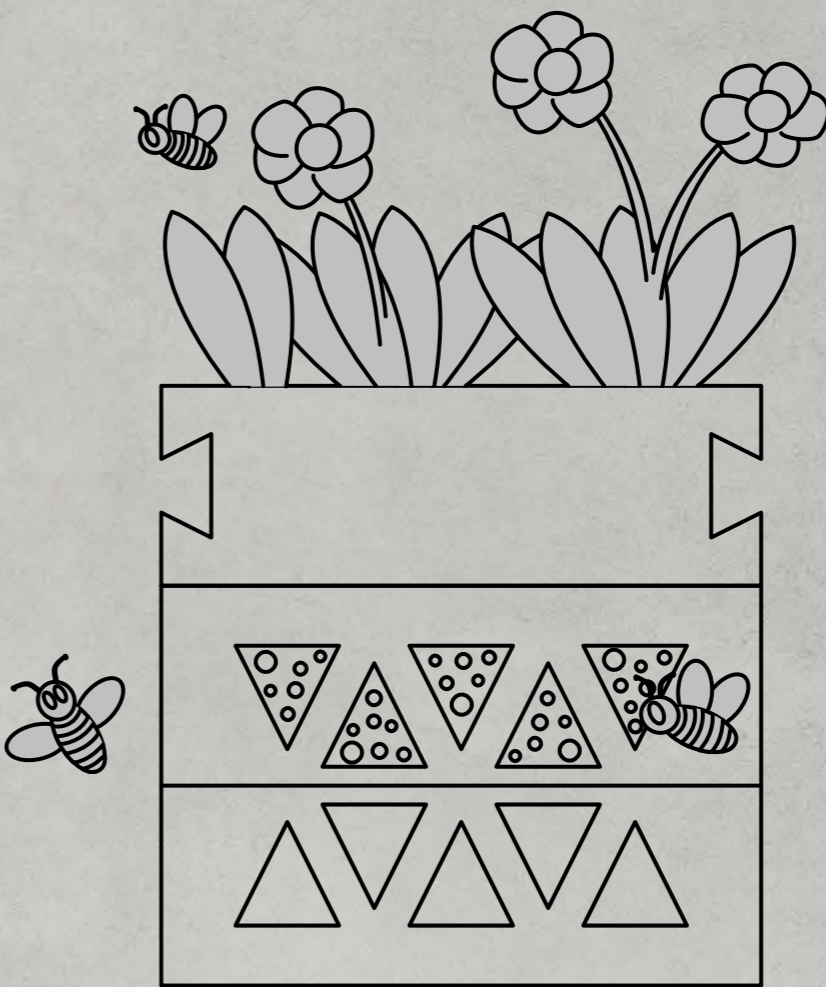


Formwork

versaTILEs can be used for the construction of a facade or a partition wall.



versaTILEs can be used for pedestrian and car parking pavement.



versaTILEs can be used as an independent pot and bee hotel, which can be placed on a balcony or in a garden.

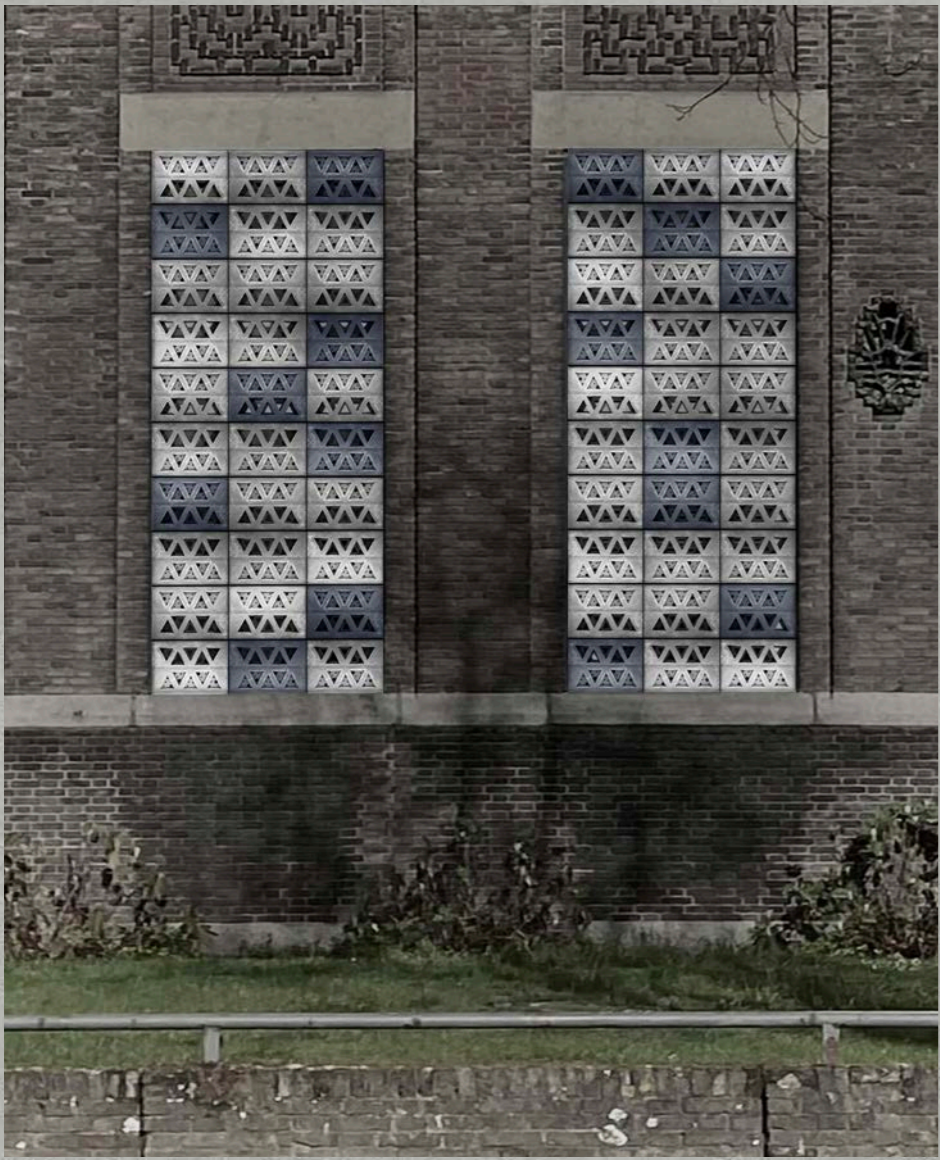




Shading and Bee Hotel Facade



Paving for Car Parking



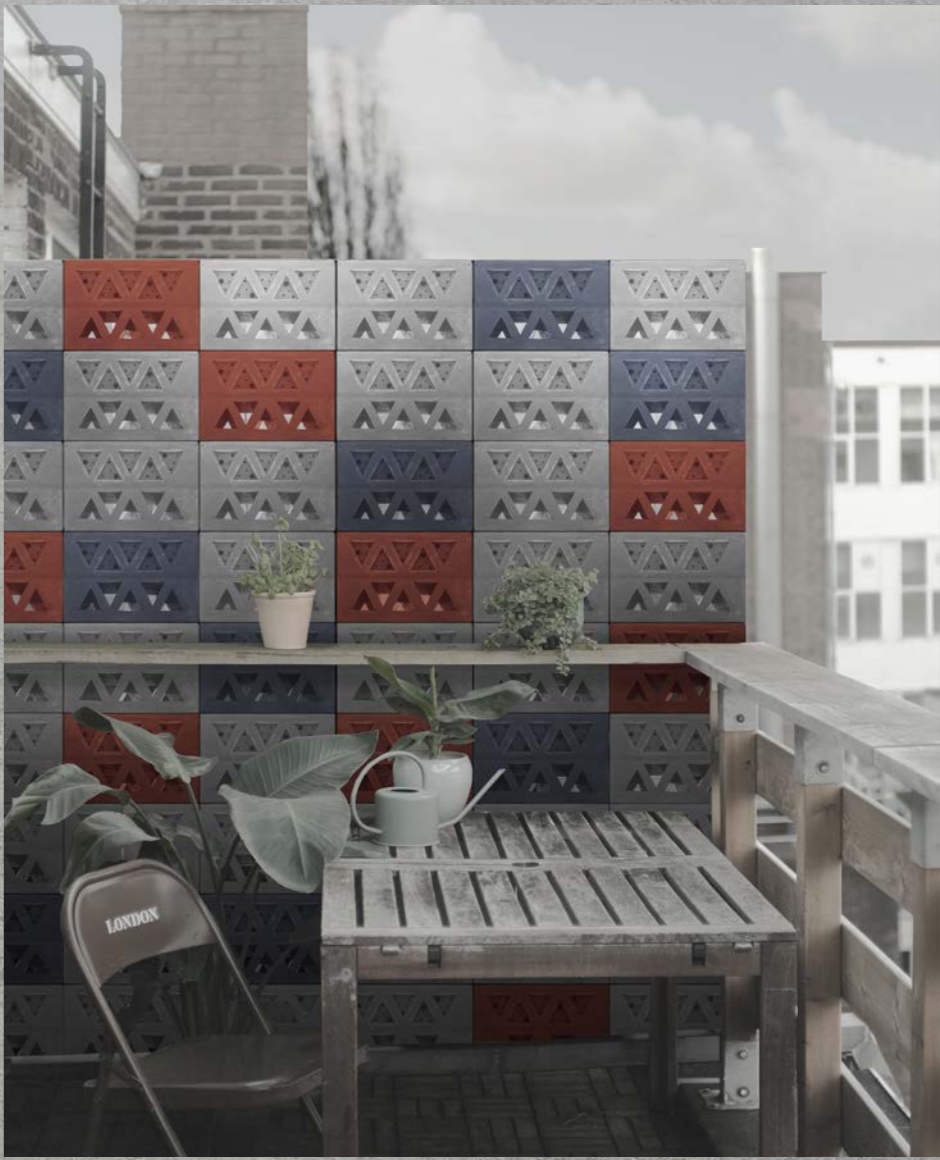
Shading and Bee Hotel Facade



Green Facade for Climbing Plants



Single Bee Hotels



Free Standing Partition Wall

