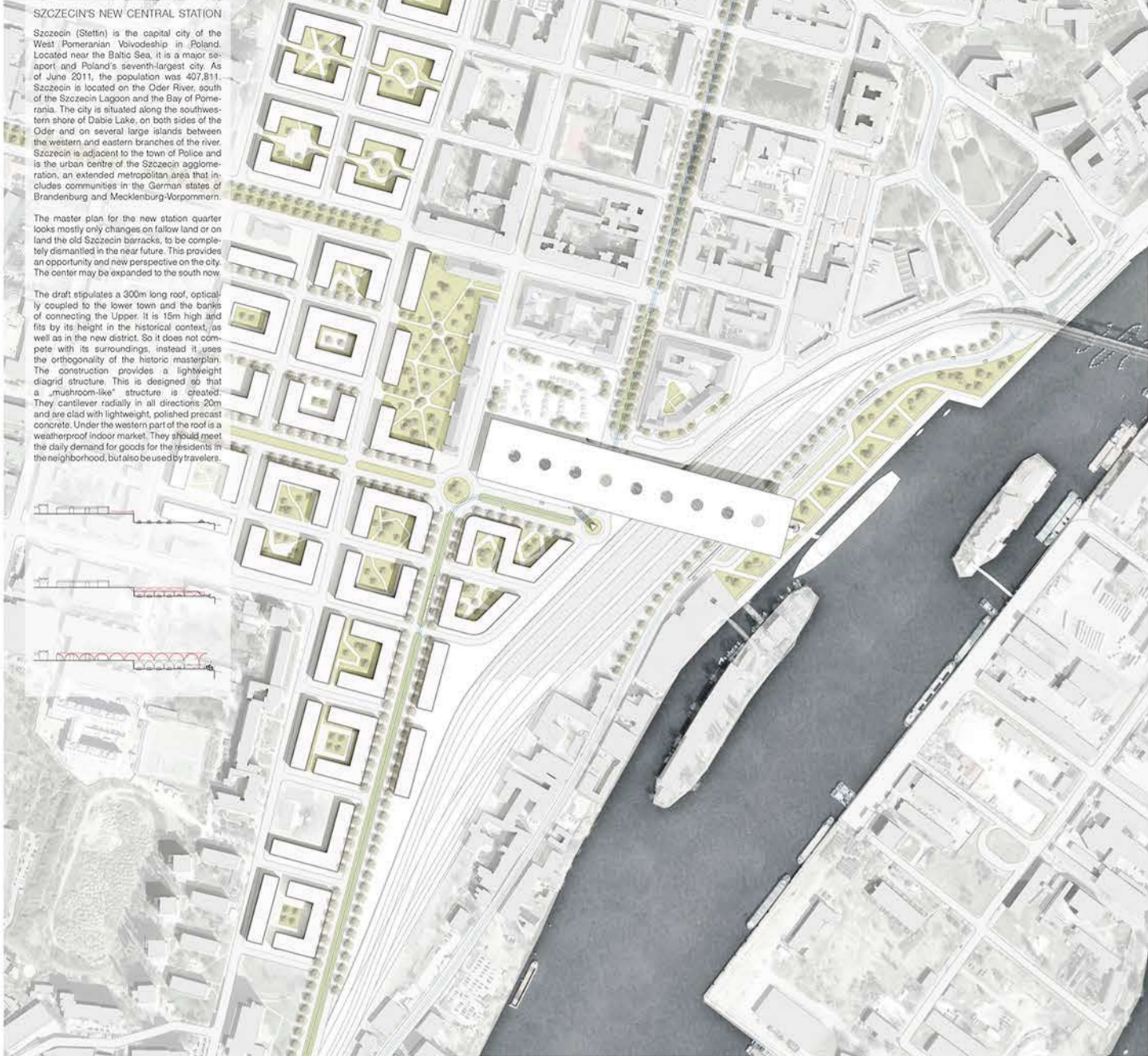


LR119



SZCZECIN'S NEW CENTRAL STATION
 Szczecin (Berlin) is the capital city of the West Pomeranian Voivodeship in Poland. Located near the Baltic Sea, it is a major seaport and Poland's seventh-largest city. As of July 2011, the population was 402,831. Szczecin is located on the Oder River south of the Szczecin Lagoon and the Bay of Pomerania. The city is situated along the southern bank of the Oder, on both sides of the Oder and on several large islands between the western and eastern branches of the river. Szczecin is adjacent to the town of Police and is the urban centre of the Szczecin agglomeration, an extended metropolitan area that includes communities in the German states of Brandenburg and Mecklenburg-Vorpommern.

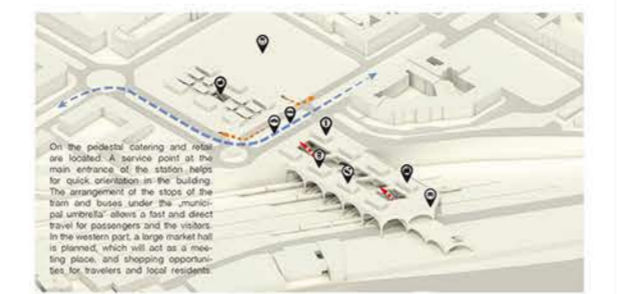
The master plan for the new station quarter looks mostly only changes on former land on land the old Szczecin barracks, to be completely demolished in the near future. This provides an opportunity and new perspective on the city. The center may be expanded to the south side.

The draft establishes a 200m long roof, spatially coupled to the lower town and the banks of the Oder. It is 15m high and sits by its height in the historical context, as well as in the new district. So it does not compete with its surroundings, instead it uses the opportunity of the historic masterplan. The construction provides a lightweight design structure. This is designed so that a "mainroom-like" structure is created. They coordinate reality in all directions. 20m and are clad with lightweight, polished precast concrete. Under the western part of the roof is a weatherproof outdoor market. They should meet the daily demand for goods for the local community, but also be used by travelers.

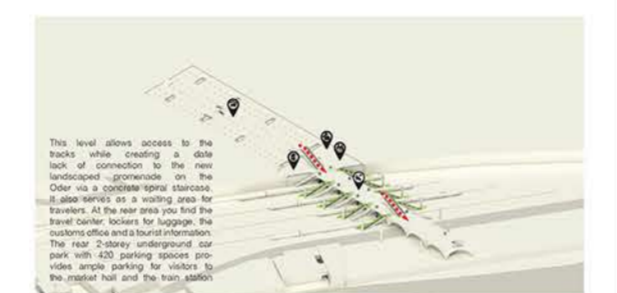
MASTER PLAN



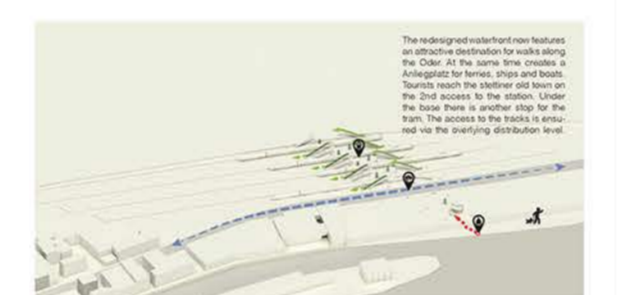
WESTERN ENTRANCE MARKET HALL



On the platform, stairs and walkways lead to the main entrance of the station. Here, for quick orientation in the building, the arrangement of the steps of the main and stairs under the main entrance, about a half and street level for passengers and the visitors in the western part, a large market hall is planned, which will act as a meeting place, and shopping opportunities for travelers and local residents.



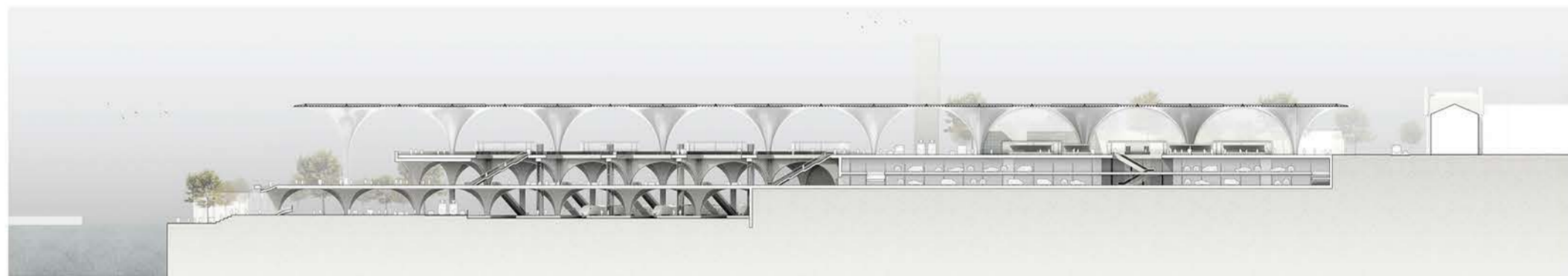
This level allows access to the tracks while creating a clear path of connection to the new landscaped greenery on the Oder as a public space. It also serves as a waiting area for travelers. At the end area you find the travel ticket lockers for luggage, the underground area and bus information. The new 2-story underground car park with 250 parking spaces provides quick parking for visitors to the station and the bus station.



The redesigned waterfront now features an attractive destination for walks along the Oder. At the same time, it creates an Amphitheater for performances and events. Squares connect the historic old town on the Oder to the station. Under the new floor is an outdoor shop for the market. The access to the tracks is achieved via the shopping distribution level.



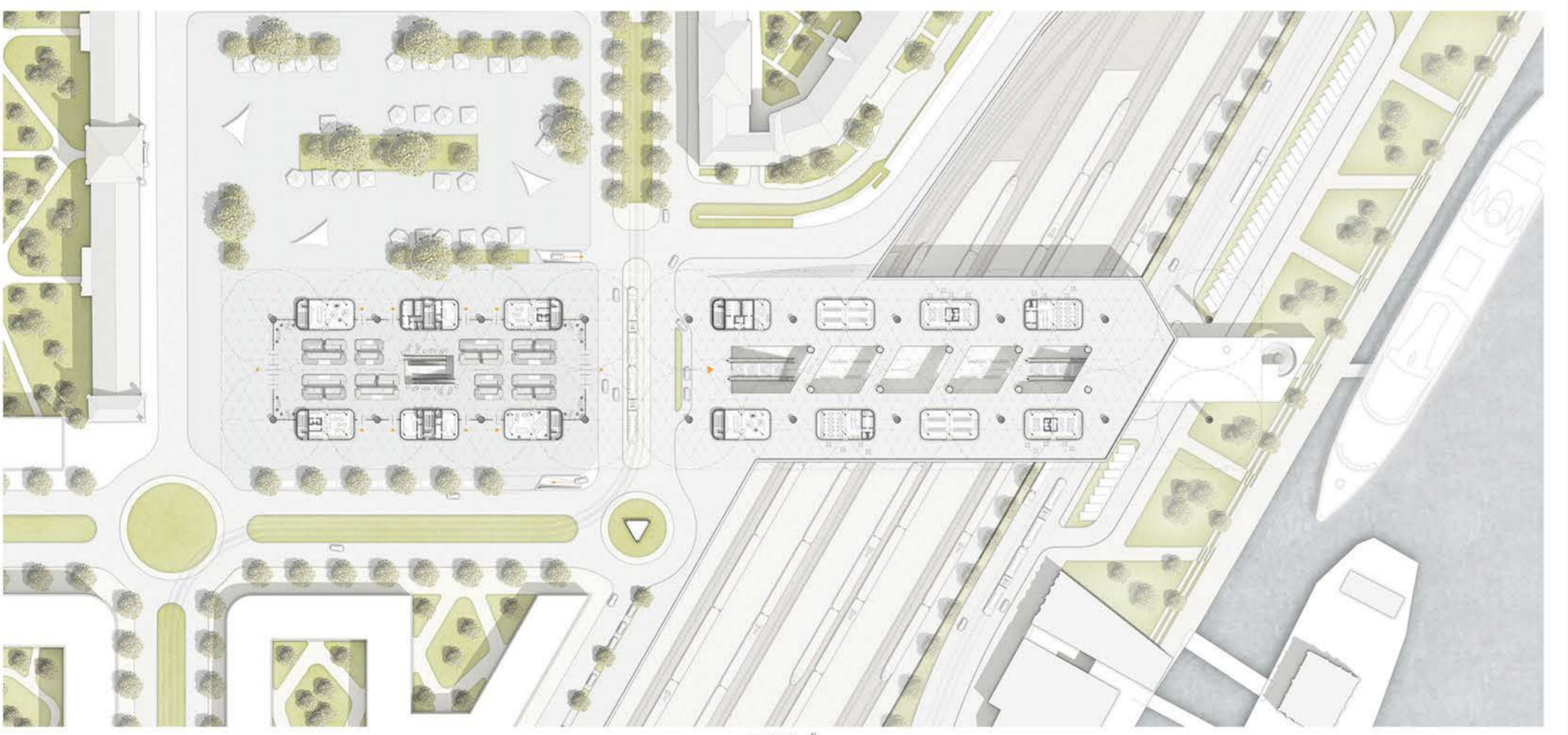
WAITING AREA



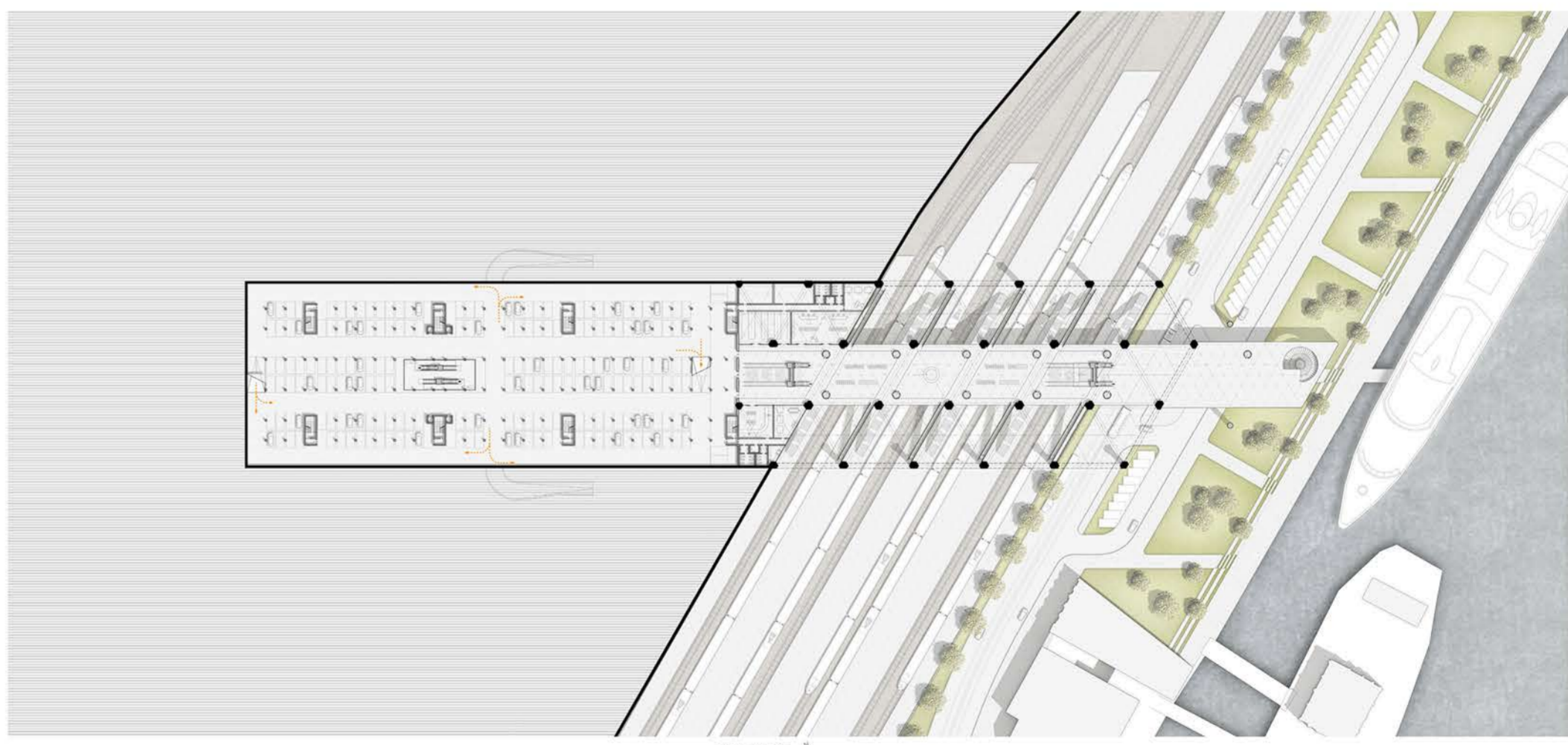
LONGITUDINAL SECTION



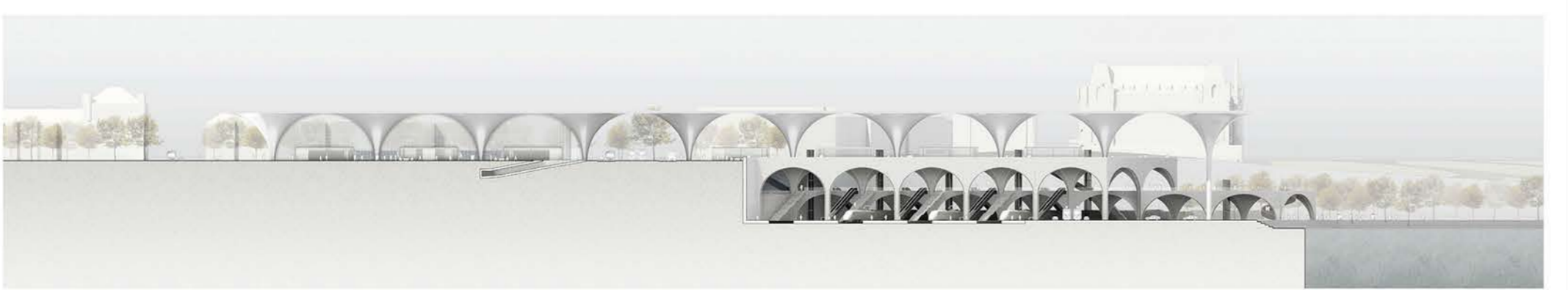
PLATFORMS



SALES FLOOR



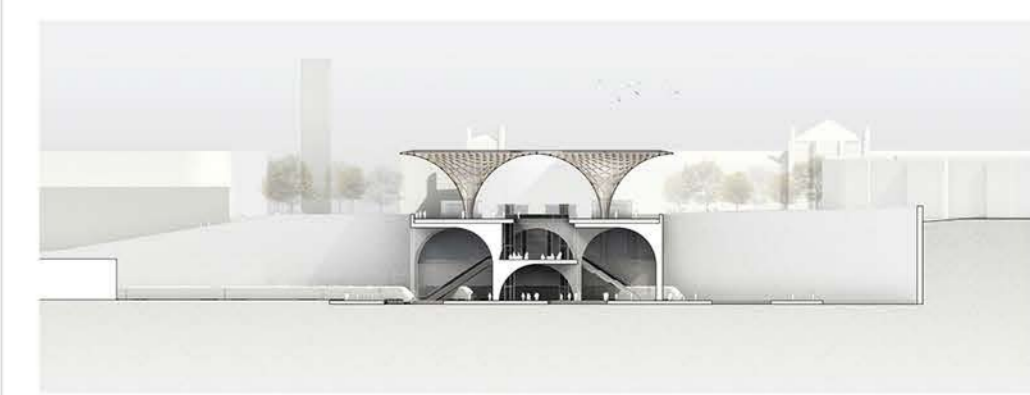
DISTRIBUTION LEVEL



ELEVATION SOUTH



ELEVATION EAST



CROSS SECTION