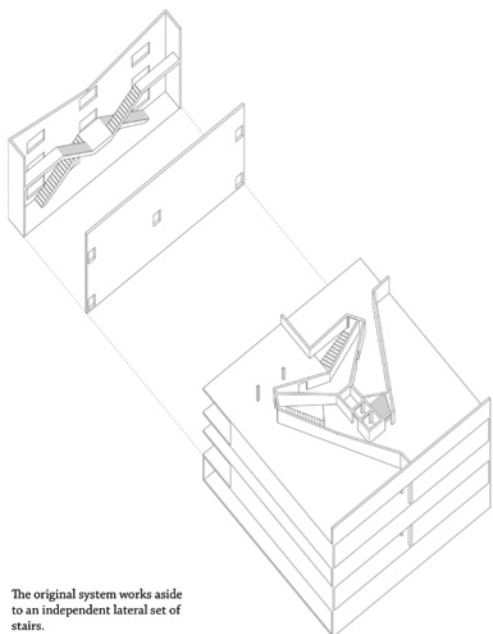
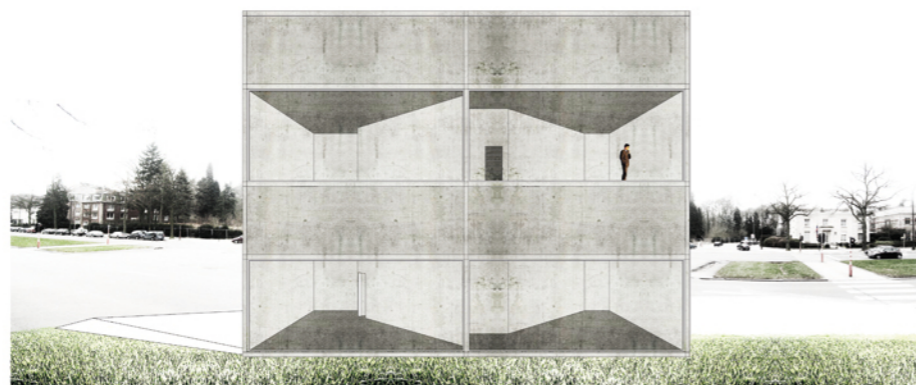


The two heads, three arms, one penis man



The original system works aside to an independent lateral set of stairs.



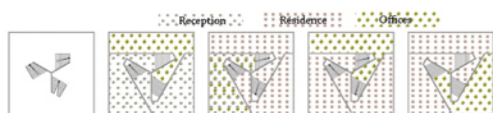
The embassy is all at a time, a house, the one of the ambassador, an office building employees of diplomacy go to daily and a highly ritualized place of reception and representation. The project proposes to glorify the simultaneous attendance of multiple activities and the uncertainty of their relations. The places of these activities are then pictured as parallel universes that coexist, brush against each other and at times, meet.

They are generated by one and same system: a tripartite helical circulation having its own set of laws. The system establishes the structural logic of the project and specifies how the activities are displayed within the building. In order to set the shapes, the dimensions and the mutual relations of the spaces, the initial structure is then subjected to a few operations which have several effects that multiply in chain reactions. Each element of the whole is depending on the others.

Despite the original system is unrelenting, that it is set for every floor, it likewise allows discontinuity, exception, variations of which combinations endlessly multiply. The unique device embraces many personalities so as to meet the diversity of situations and to offer them variable qualities.



Initial system
Offers various and suitable orientations and vues to each part the system



Discontinuity inside the system
The reversal of one of the stairs isolate a part of the building, the residence, from the bottom of the helical circulation



Rotation of some of the last walls of the system
Enable the spaces to get suitable relative dimensions



Thickening of the first walls of the system
Offers smaller spaces alternately available for each of the large ones and put in the private access to the residence.

