



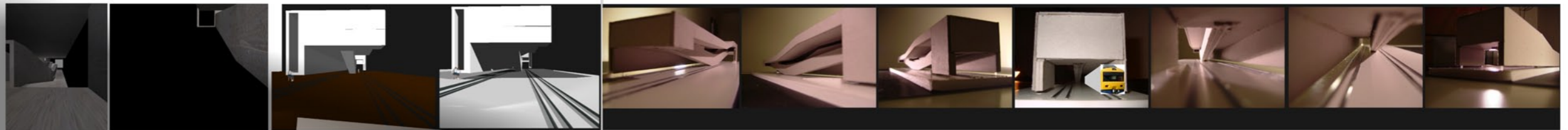
“REFERENCE
AS
BOUNDARY
OF REALITY”

“POEMS WITHOUT WORDS, WORDS THAT GIVE UP ITS FISICAL CONFIGURATES AND LOOK FOR, THE ABSENT MEANING OF IDEAS, THE UNREFERENCES OF THE THOUGHT. THE LINE APEARES AS SMALL .SOUND, A FIGURE THAT EXPRESSES THE MUTABLE FISIONOMY. LINES OF ITS MORFOLOGICAL EXISTENCE, DESCRIVING ITS PHRAZING...

IN DEAMBUALÇÕES OBLIQUAS
ANTÓNIO RAMOS ROSA

Lines that generate fragments of a same territory, of different existences and errant courses of the Man, who instintively looks for the essence of the other side of the life (limit).
Distant looks ,fugacious over the void, in the impossibility of reaching it.
Expression tagged by the wrinkles of a life. Deep scars of a territory, where the vacant shadows, of the other side, attract the natural curiosity of the human existence.
Being the territory we live in, truly mutilated by deep segregating scars.
As an object of study, an existence of a railroad, just a physical boundary of a territory impassable to Man.
It comes to mind to intervene over that same frontier, making it habitable. In limit, all the extension of that same line will be utilizable by Man.
It becomes clear, that the human behavior over the opposite limits, of that same line should be changed as less as possible.
Through the existence of a structure/spacial structure will necessarily have just one contact point with the ground.
Huge paradox ?
The spacial construction of a line just composed by points.
It matters to me just the Robustness of Material, as a physical element that defines o way of inhabit.

(No) SITE < LIMIT



TRAIN
2 WAYS
ONE DIRECTION
3 LEVELS OF INHABITILY



ROBUSTENESS
“SUBTLETY
OF
THE MATERIAL”

THE DENIAL OF THE SEARCHED COMPLEXITY
FUNCTIONING
AS THE
CHANGED UNIT

THE SUBVERSION OF SPACE
STRUCTURAL MANIPULATION OF THE (NO)SITE

EMERGENCY RAIL ROAD

