

"Mom when it rots, can we dig it up and see the bones?"

The concrete building had achieved his peak before 1973. The economical crisis linked to the oil shock had as following to slow the ardor of the designer. Under this point of view, the Place of Science of Louvain-la-Neuve may be considered as the last monument to exprime this single formal liberty in history.

From this point, our intervention aim is to express this performance, implicitly present in the building. The place of Science represent a historical issue, considering the scale of this young city.

Indeed, the Library of Science is the first building in Louvain-la-Neuve. It own a monumental and historical character which has to be considered.

Front of those issues, our proposal consider the question of the extension under a specifical angle: in this case, we propose to act more by subtraction than by addition. In concrete terms, we offer to work on the subsoil, which permit us to put in evidence the more primitive structure of the place.

Moreover we search to explore this ambiguity which can be created between a building which we monumentalize (almost literally), and on which, all at once, we perform violent acts, close to the scarification.

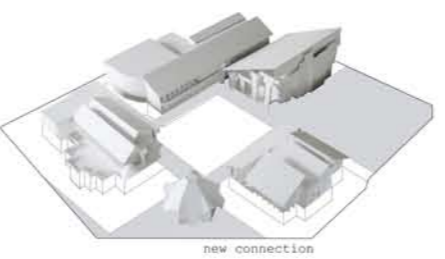
By creating a confrontation between those two dimensions, we put in bare the true potentiality of the building. Indeed, we see the implicit performance as the identification, the reconsideration and sublimation of the already present forces.



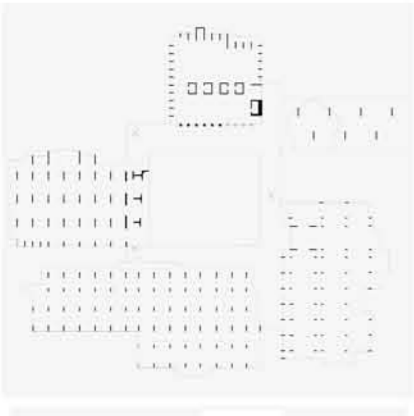
new spatial potential



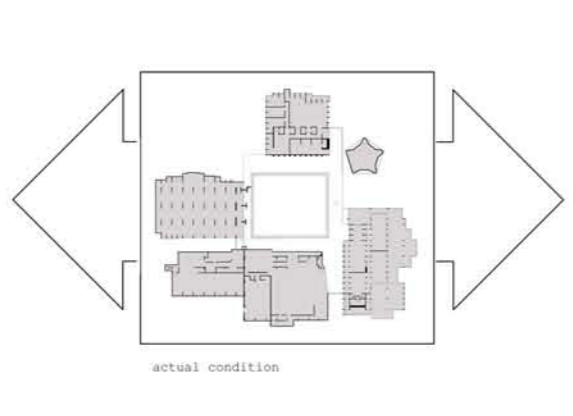
actual condition



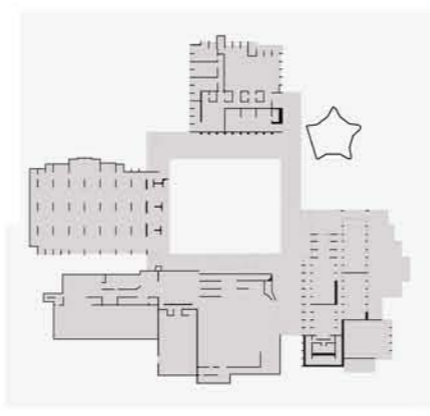
new connection



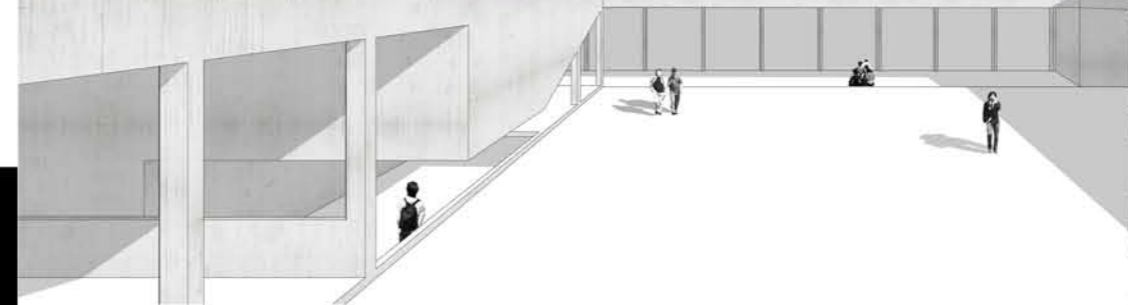
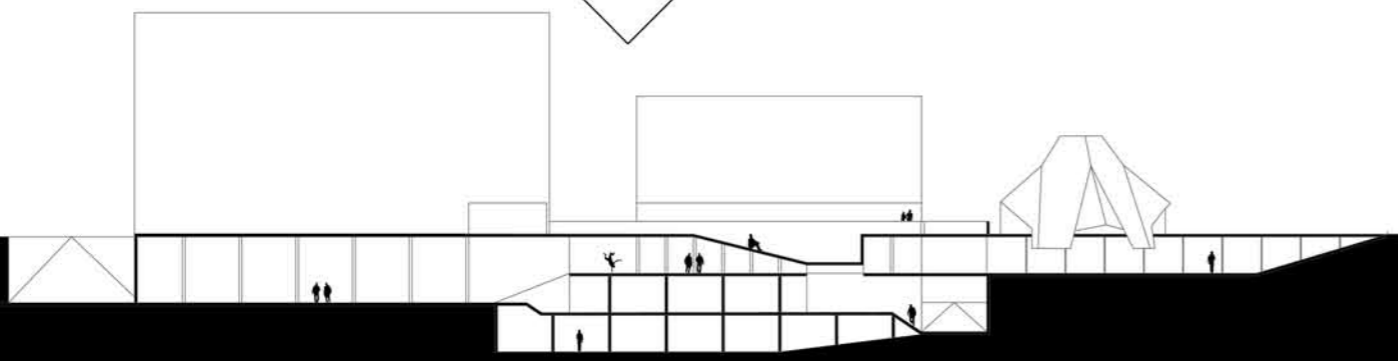
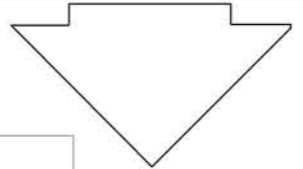
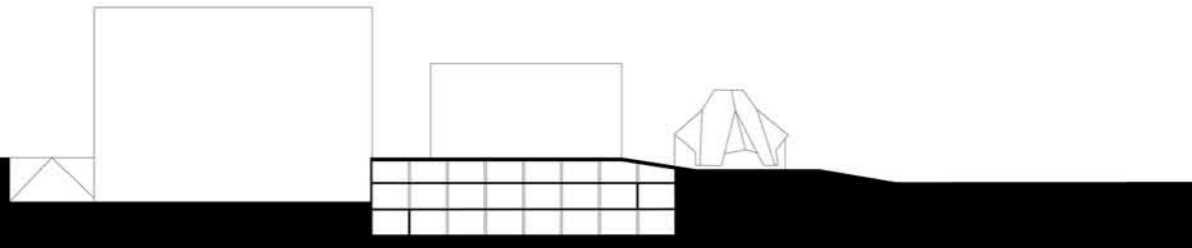
connection with environment



actual condition



connection between buildings



The intervention permit to glorify the building and at the same time allows new functions and uses.



By digging, new connections are made and the ancient concrete structure become visible.



An appropriate entry for the library is made, the place is transformed in an ambiguous space, an inner space, a cloister which can become an open hall during events. The status of the place is clarified.

