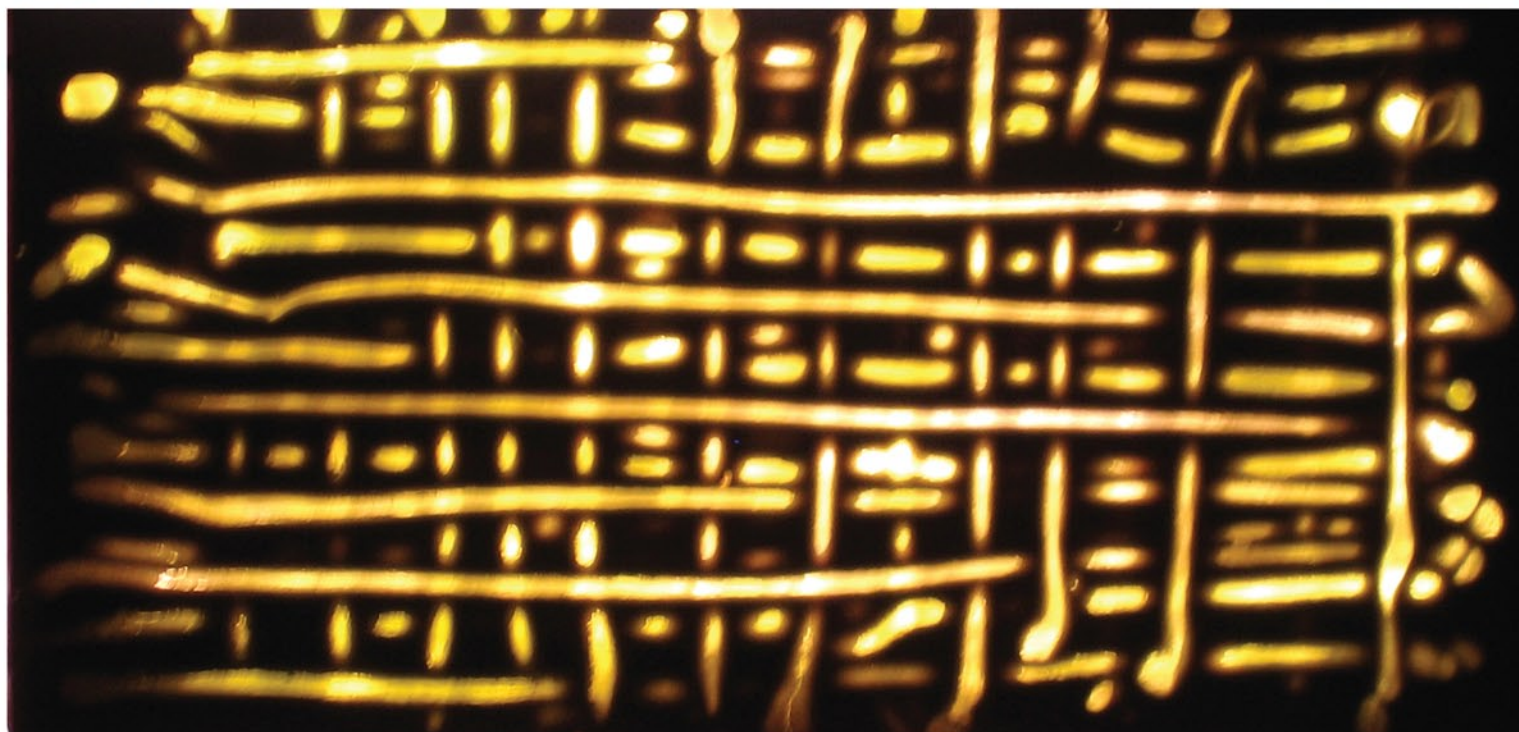
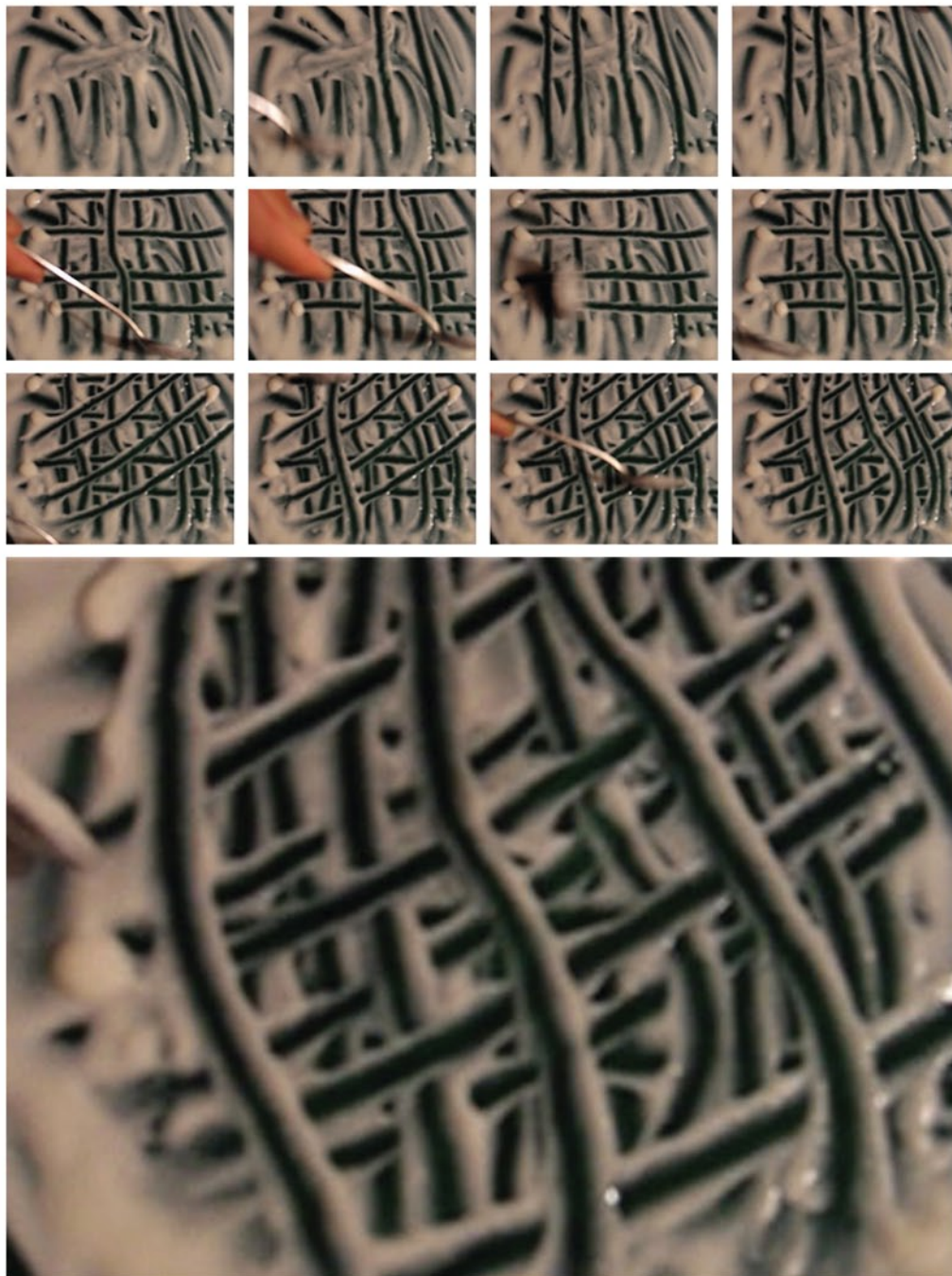


NI385

Within Layers of different scale

Looking through a window it is evident that every scene is one of 100% opacity. Looking up towards the emptiness of the universe there is the notion of something else. Staring into space could be staring into transparency. When there is no limit or the deepest layer can not be perceived - there is transparency. Opacity and transparency can not be understood without each other



NI385

Within Layers of different scale

Concrete is a fluid that fills a void and burns into its frozen form.

The plastic property of concrete, in this case, is the ability to perfectly fill a void. Intersecting layers of plastic permits light to penetrate. The modell contain hundreds of layers within the depth of a thin slice.

Windows never stress the void within walls, they are merely holes. In this case the modeled space within the material is amplified - the experience of light as originating in the wall it-self.

The proposal is not a finished product. It is a concept to be developed in different ways. An idea easily translated into furniture or a full-scale wall. It's a concious choice not to display such a product, for it would limit the imaginatory force of others and thus decrease the directions of future development.

