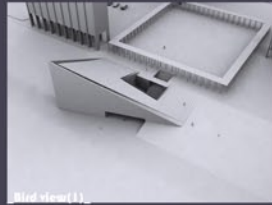
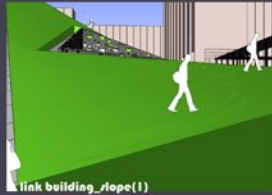


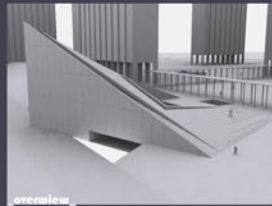
MY 717



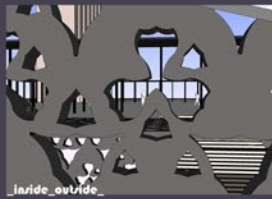
Bird view(1)



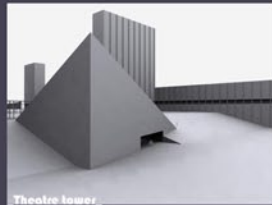
_link building_slope(1)_



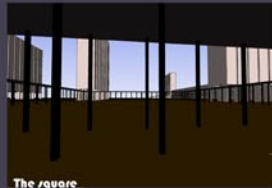
overview



_inside_outside_



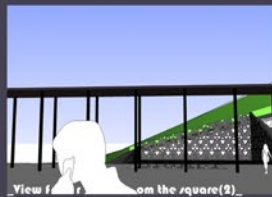
Theatre lower



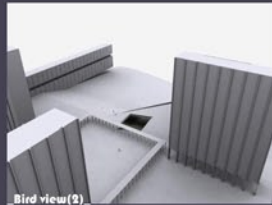
The square



View from the square(1)



View from the square(2)



Bird view(2)

Cultural fruit

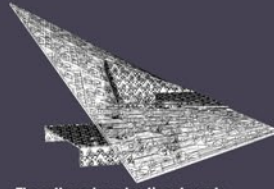
Underneath an open folded slope in Laeken awakes a **socio_cultural_centre** which looks totally closed. In the middle of the fruit is an **f-shaped atrium** situated. The atrium serves as a **passage** from a higher part of the site model (the square) to a lower part of it (the street, the supermarket). This way it also leads people who don't aim to go to the **cultural_center** right through the heart of the building. On the other hand it forms the beating heart of the building, which is totally enclosed on the outside **as a fruit**.

All the areas that need **light, air and view** are directed towards the atrium, those who don't (like the **performance room**) lie on the outside. The main entrance is situated on the middle floor.

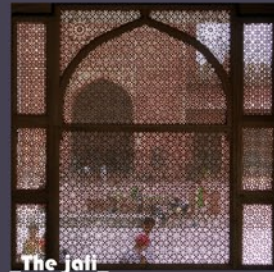
The skin of the atrium is made out of concrete: it has gaps in accordance with a pattern, like an **Islamic Jali**. It allows light to enter while it forms a structural element. It is capable to -together with the outer walls- hold the entire structure without additional columns. It filters the light and activities from inside to outside and from outside to inside.

The roof is double curved, like a **hyperplate**, that way it can link up with the slope on one side of the building, be horizontal at the square and cover the theatre tower in the opposite corner. Here again the pattern is applied so that it can work as a joist plate. The roof is a **greenness** roof and is open to the public.

These elements give every area on the inside and the outside a different shape and different **experience**, and besides, it will differ on every moment of the day, and the whole year through.



The patterned construction elements



The jali



The pattern



The grid



The look



_link building_square_



_link building_slope(2)_



Panel one

MY 717



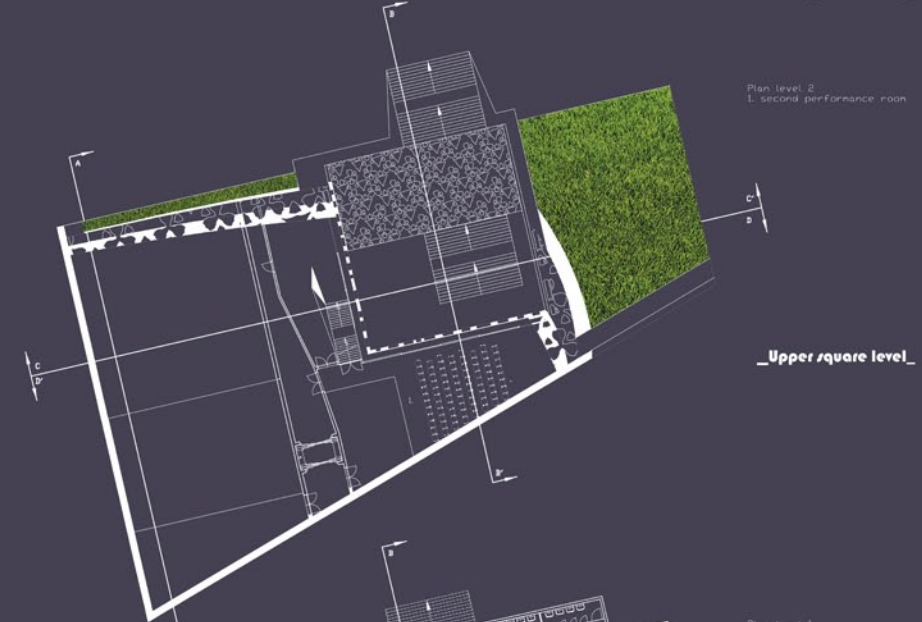
Section A-A'

Section C-C'

Section B-B'

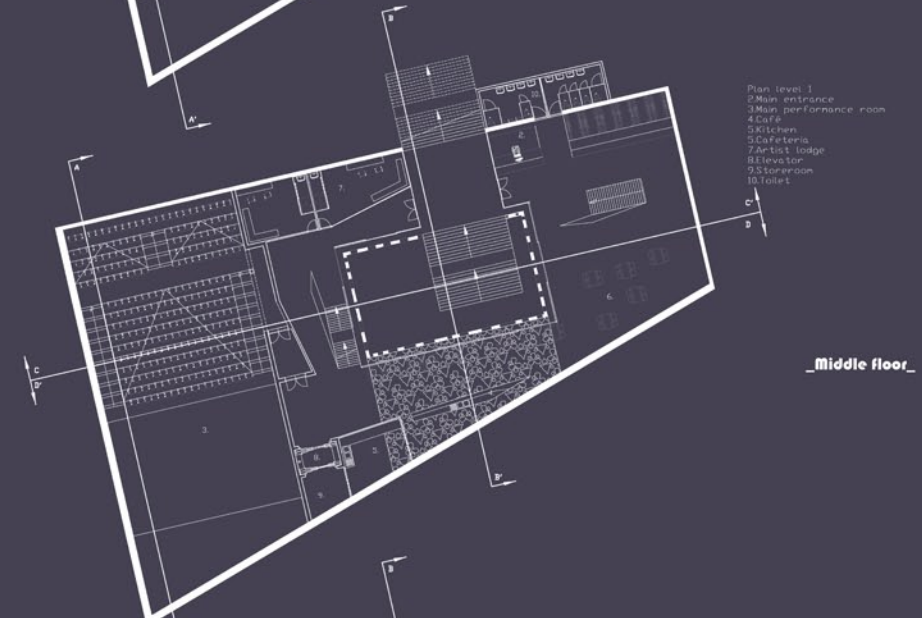
Section D-D'

sections



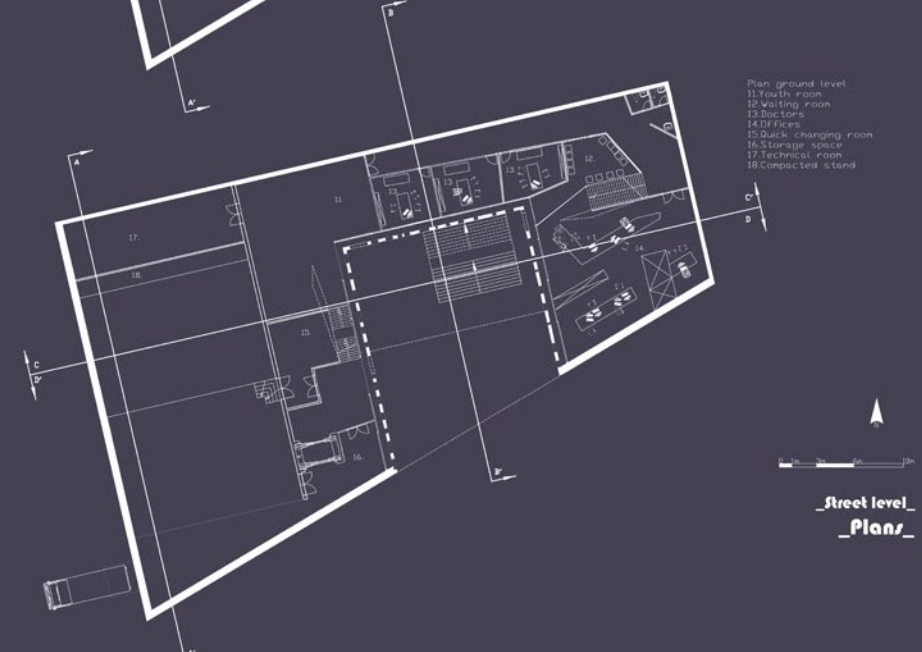
_Plan level 2
1. second performance room_

Upper square level



_Plan level 1
2. Main entrance
3. Main performance room
4. Café
5. Kitchen
6. Cafeteria
7. Artist lodge
8. Elevator
9. Storeroom
10. Toilet_

Middle floor



_Plan ground level
11. Youth room
12. Waiting room
13. Offices
14. Offices
15. Bulk changing room
16. Storage space
17. Technical room
18. Compact stand_

Street level
Plans



Panel two