

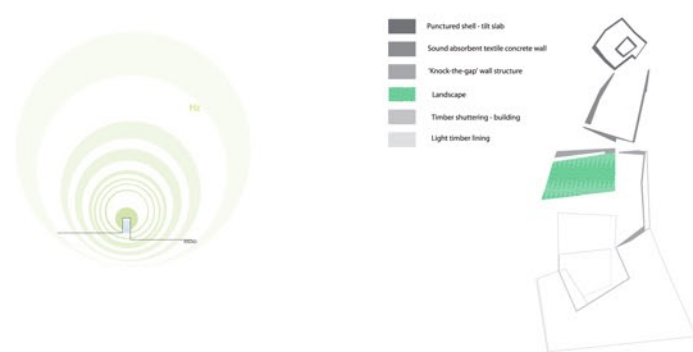
# LU001



01

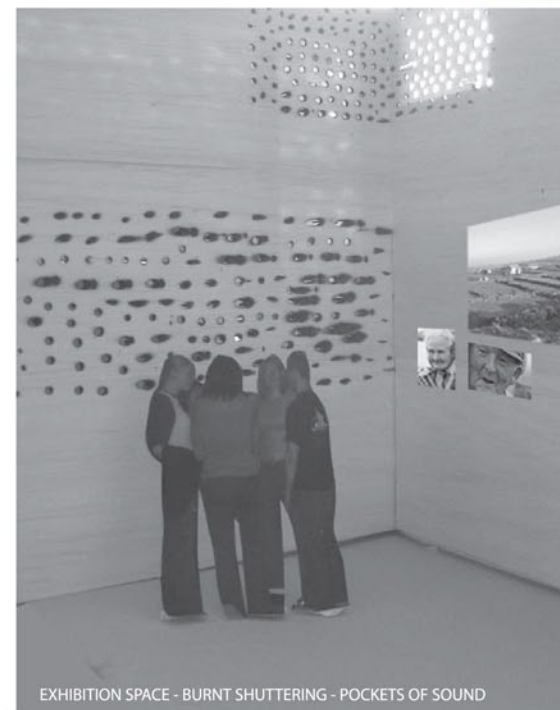
02

# LU001

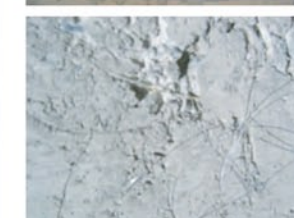
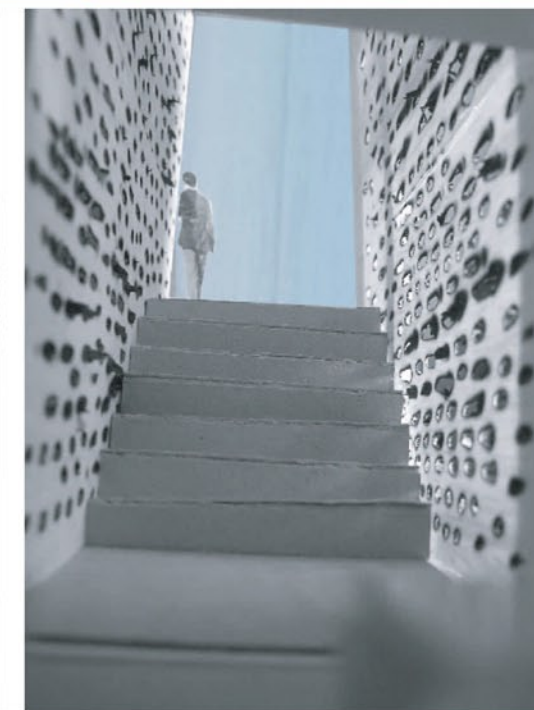


The proposal: a walled landscape situated overlooking the Aran islands, a space for the spoken word - like an Aviary. The strategy of the project consists of two complementary buildings. The first, a timber-lattice barn made from reclaimed shuttering, where sound and people may flow out onto a limestone plateau - allowing for the celebration of culture. The second, a tower, rises above the walls recalling a landscape once full of tall structures. The tower houses an archive and radio station.

The materiality of the project draws upon the ancient tradition of homogeneous 'knock-the-gap' walls that characterise the islands. The gap is developed to house existing audio-cassette collections. Future fibre-optic sound technology is accommodated by the structure of the wall. These two conditions allow for the development of different 'knock-the-gap' walls. The wall is perforated using timber shuttering and a tilt slab system. Internal 'sound pockets' are made wherein the 'gap' is burnt out - offering different qualities of opacity over time as the wall dematerialises. The accumulation of cassettes rematerialise and alters the transparency of the wall. Light is delivered to sealed sound spaces through opalescent acrylic rods - referring to fibre optic technology and digital media.



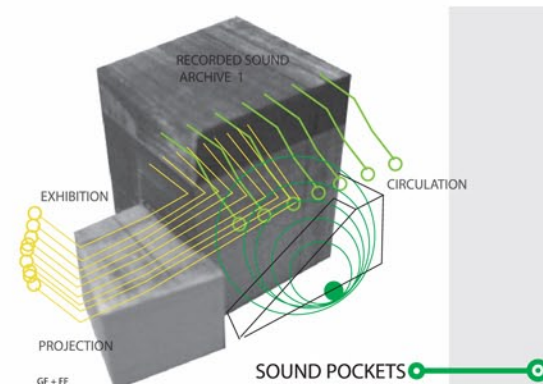
EXHIBITION SPACE - BURNT SHUTTERING - POCKETS OF SOUND



DEVELOPMENT OF GLASS-FILAMENT+ ACRYLIC WALL - ESTABLISHING THE NEED FOR SUPER PLASTICISERS, TO FLOW AROUND THE RODS

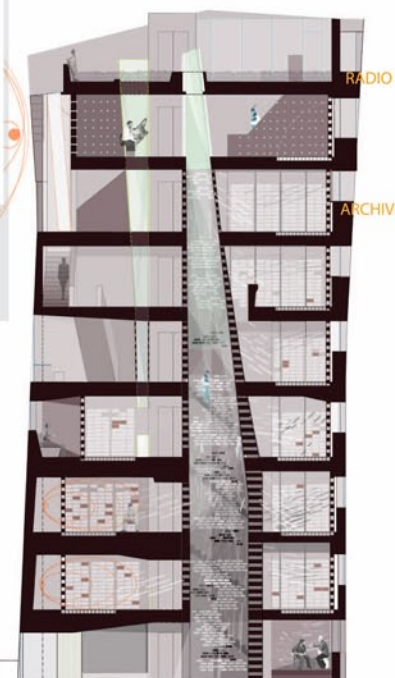


'KNOCK-THE-GAP' WALL STRUCTURE ARAN ISLANDS



PHOTOGRAPHIC EXHIBITION - LIGHT

SOUND POCKET DEVELOPMENT - WHERE SOUND FLOWS THROUGH PUNCTURED + PERFORATED WALL STRUCTURE



DEVELOPING THE WALL SYSTEM



GLASS FIBRE REINFORCEMENT

