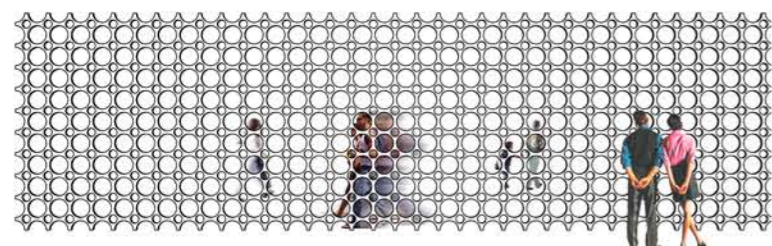
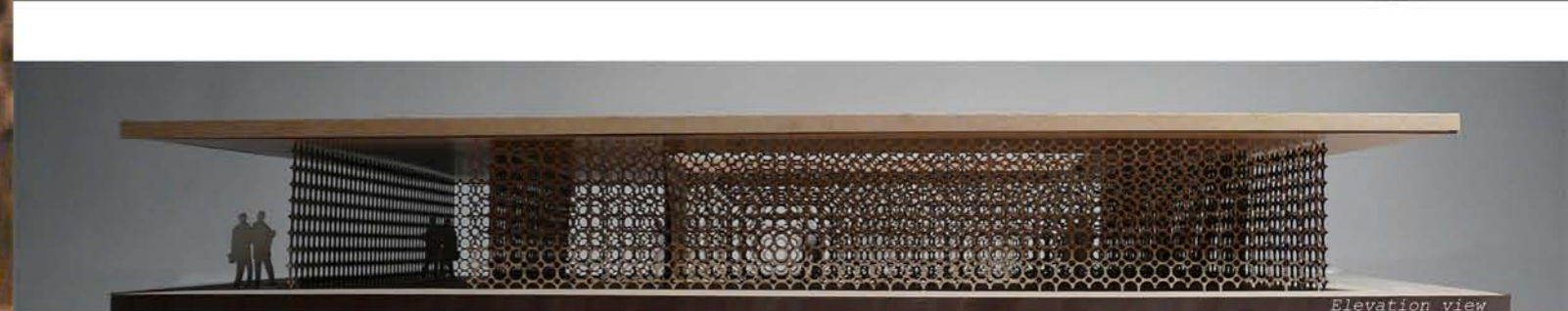
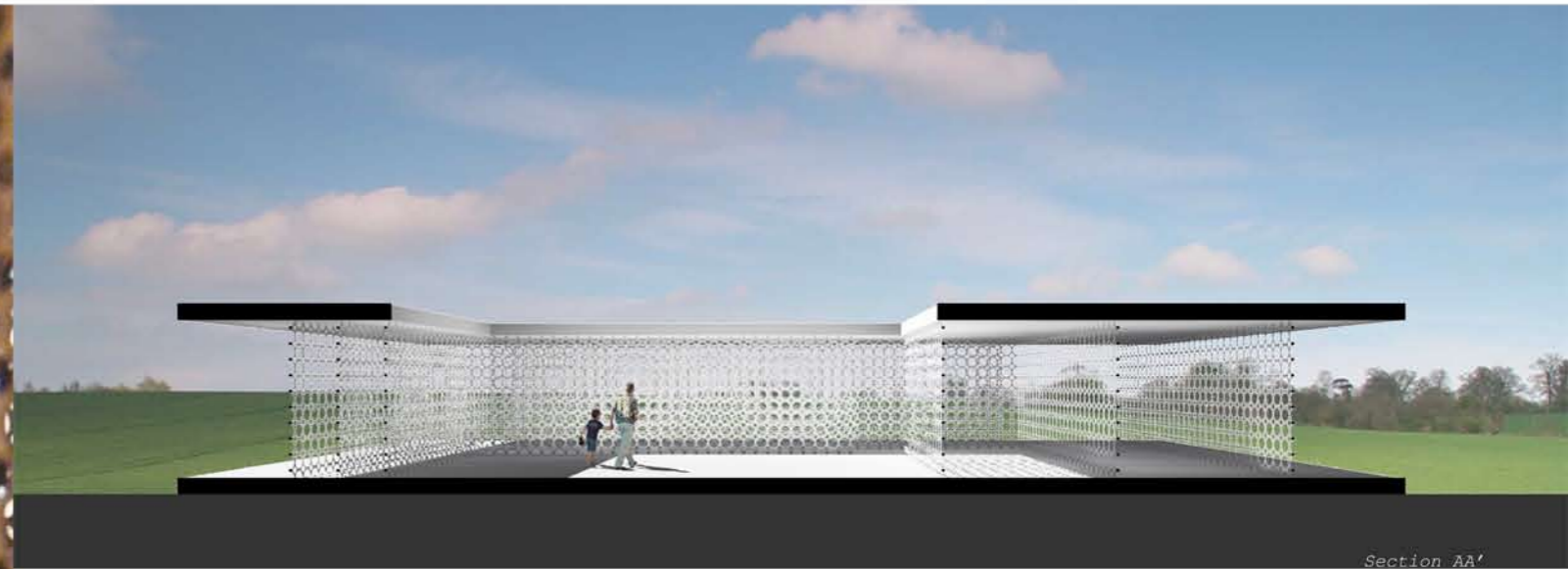
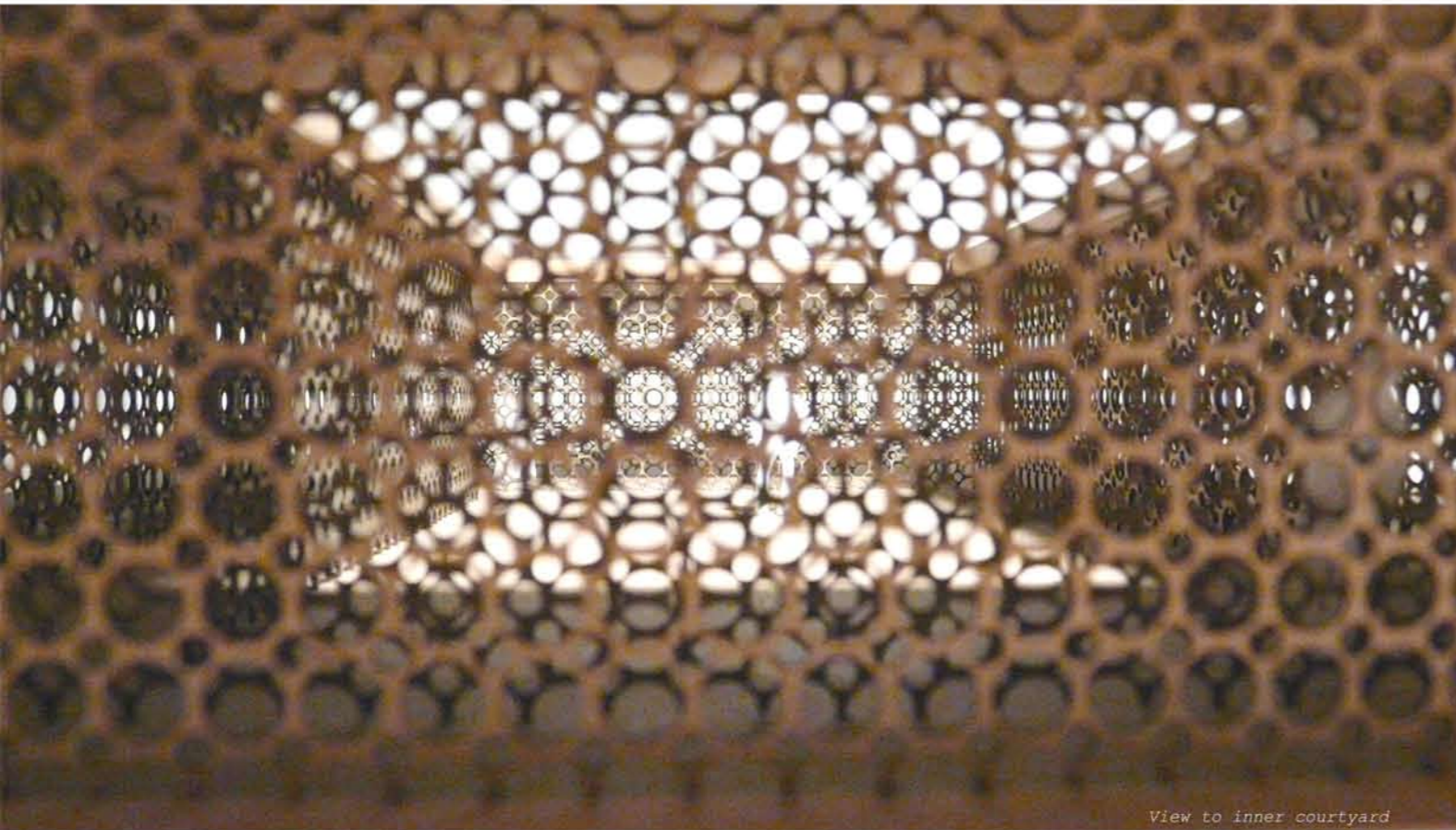
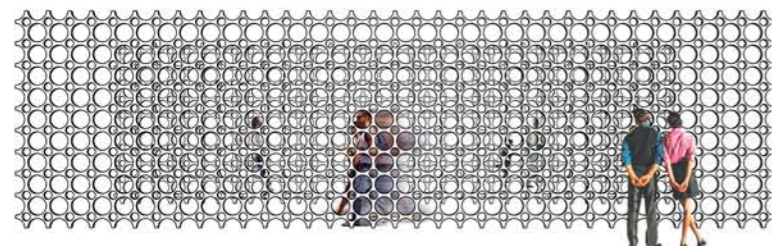


# Moiré

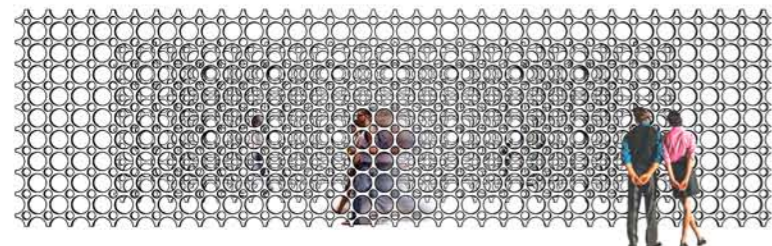
# Moiré



Screen study: 1 layer



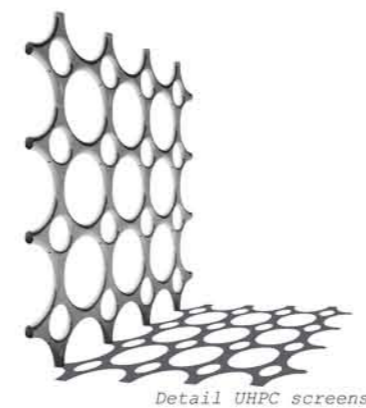
Screen study: 2 layers



Screen study: 3 layers

MOIRÉ tries to explore the possibilities of a pavilion in which the relationship between spaces are ever changing. The Leitmotiv for this concept is the application of the moiré effect on an architectural scale.

Originally, the term moiré was used to describe an effect applied to silk material to give it a wavy or rippled texture. Layers of silk were pressed together, which resulted in a cloth with alternating patterns that changed forms as the wearer moved. This effect of superimposing repetitive designs on top of each other produces patterns that are distinct from each of its components. The collection of layers becomes more than the sum total: their implicit qualities are made explicit.



The pavilion is shaped by three rings of screens made from Ultra High Performance Concrete. This material allows the screens to be extremely thin structural elements with a very smooth surface. The screens form a complex barrier between the inner courtyard and its surroundings. Its inner spaces are slowly uncovered, while at the same time the context is veiled with equal rate when one ventures thru the pavilion. In stead of the silk cloth that is moved, it is now the movement of the observer which causes the relationship between screens to alter.

