



Metrostation Sokol, Moscow



TWA Terminal, New York



cast model TWA\_Interior



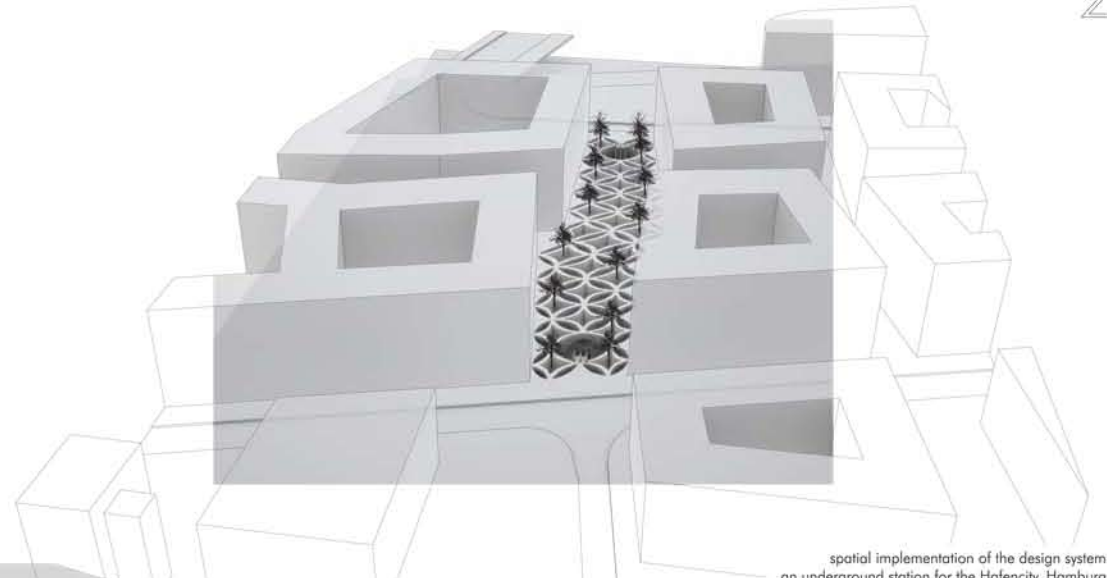
module from double-curved surfaces



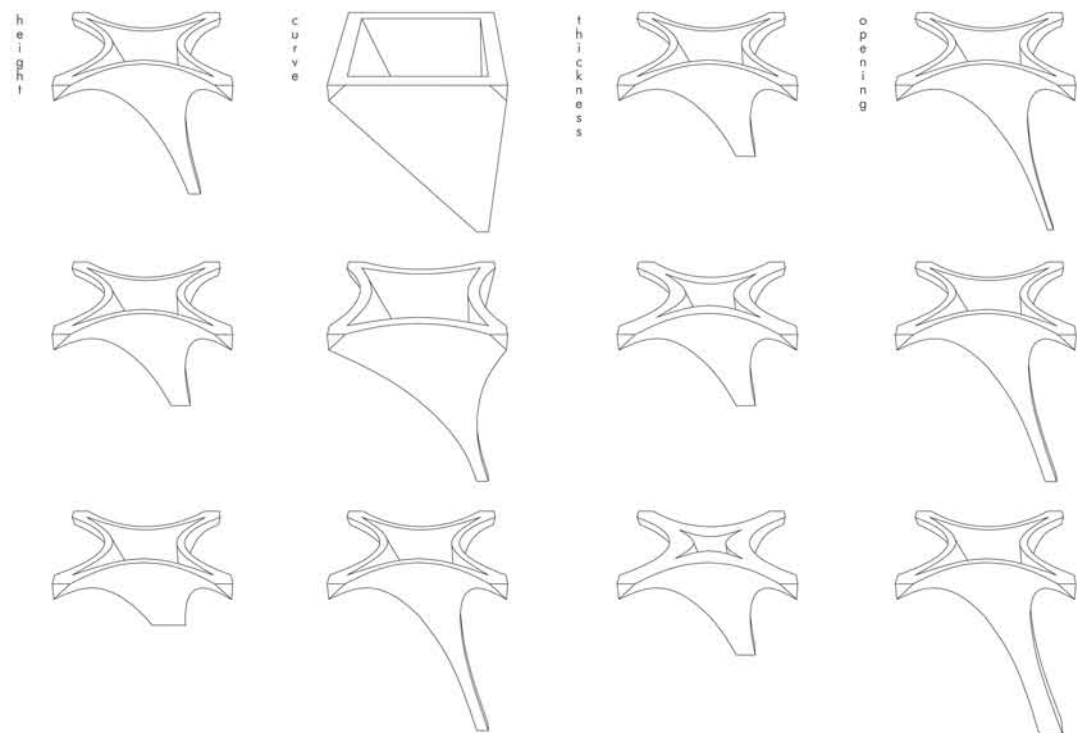
modules fabricate from lasercut surfaces for the physical prototype



experimental research into double curved surfaces



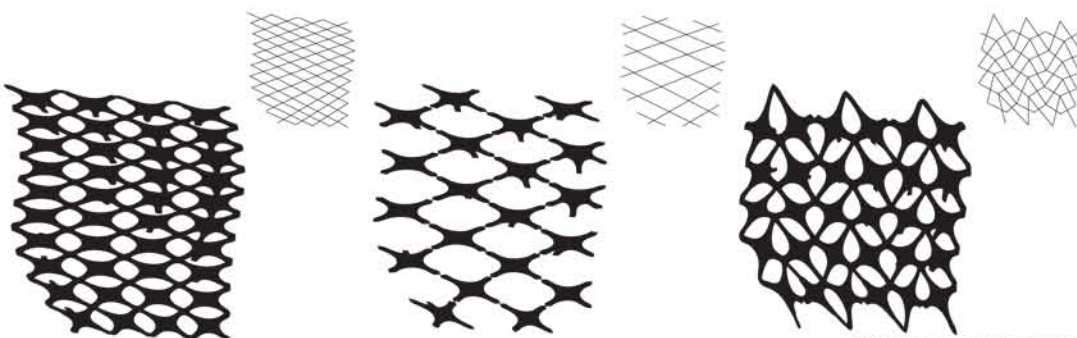
spatial implementation of the design system: an underground station for the Hafencity, Hamburg



the implemented parameters transform the components into a variety of configurations like structural functions and different scenarios of light modulation



3x3pattern prototype



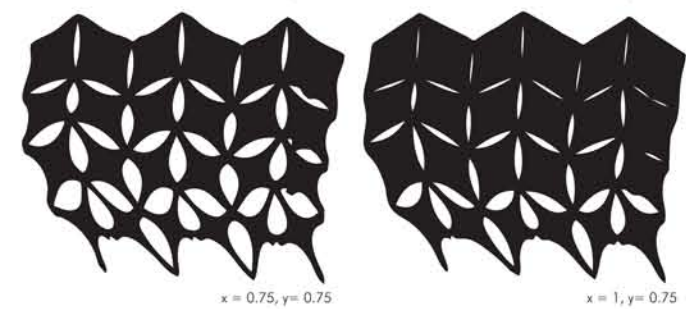
different versions of gridassemblies



x = 0, y = 0.75

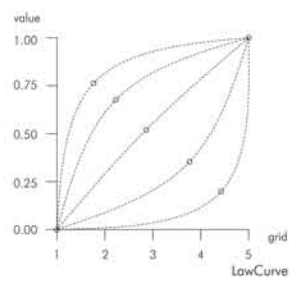
x = 0.25, y = 0.75

x = 0.5, y = 0.75



x = 0.75, y = 0.75

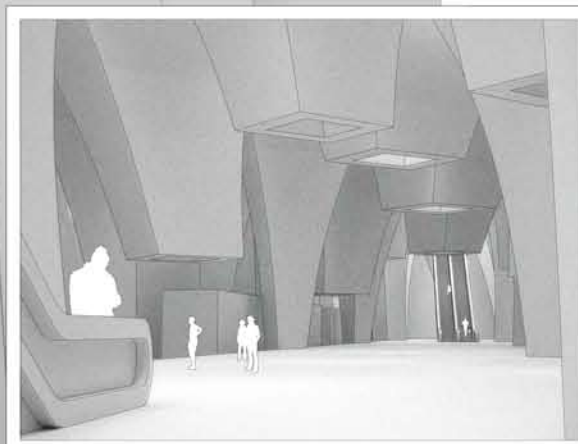
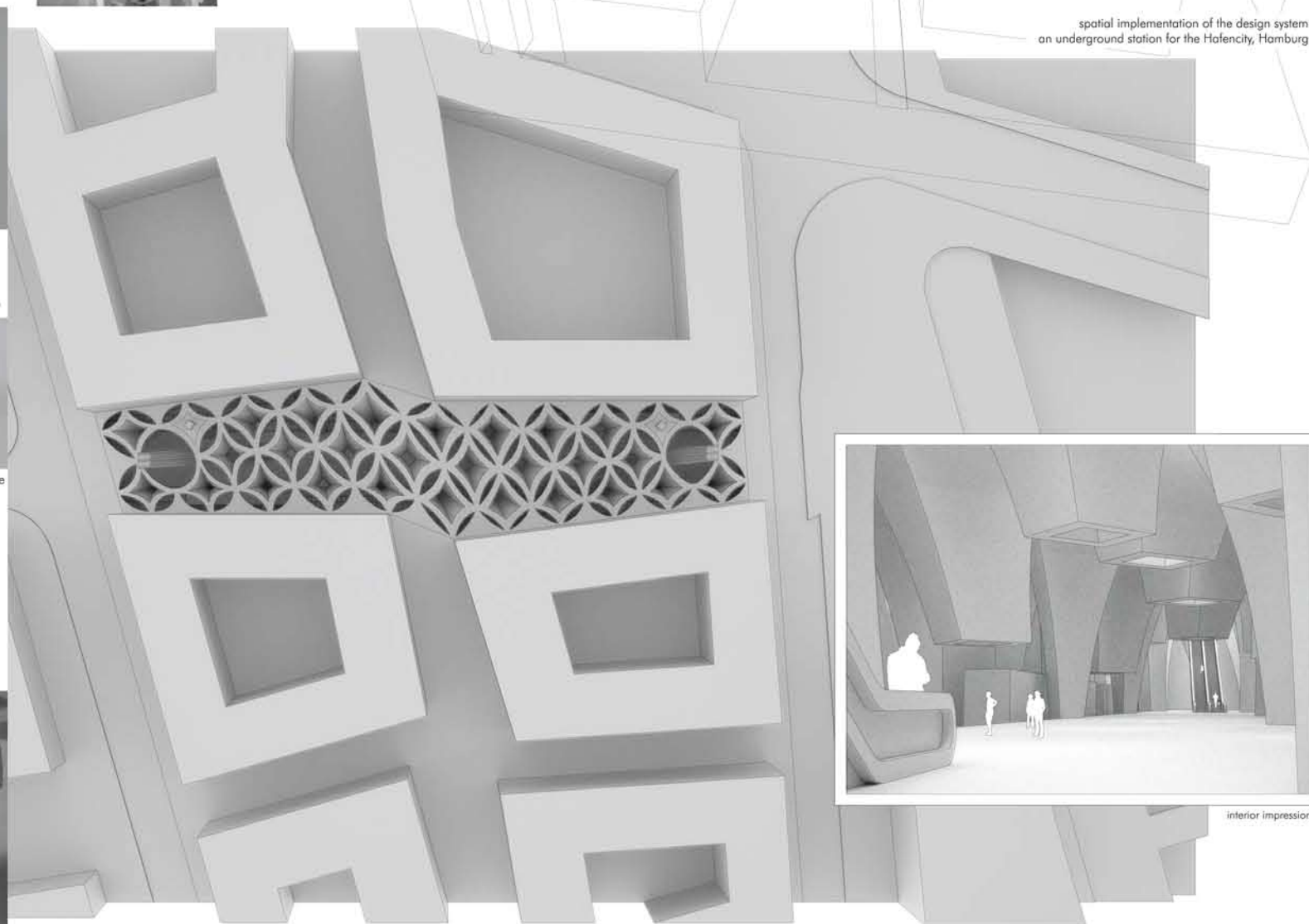
x = 1, y = 0.75



lowCurves control parameters such as the gradual change of opening

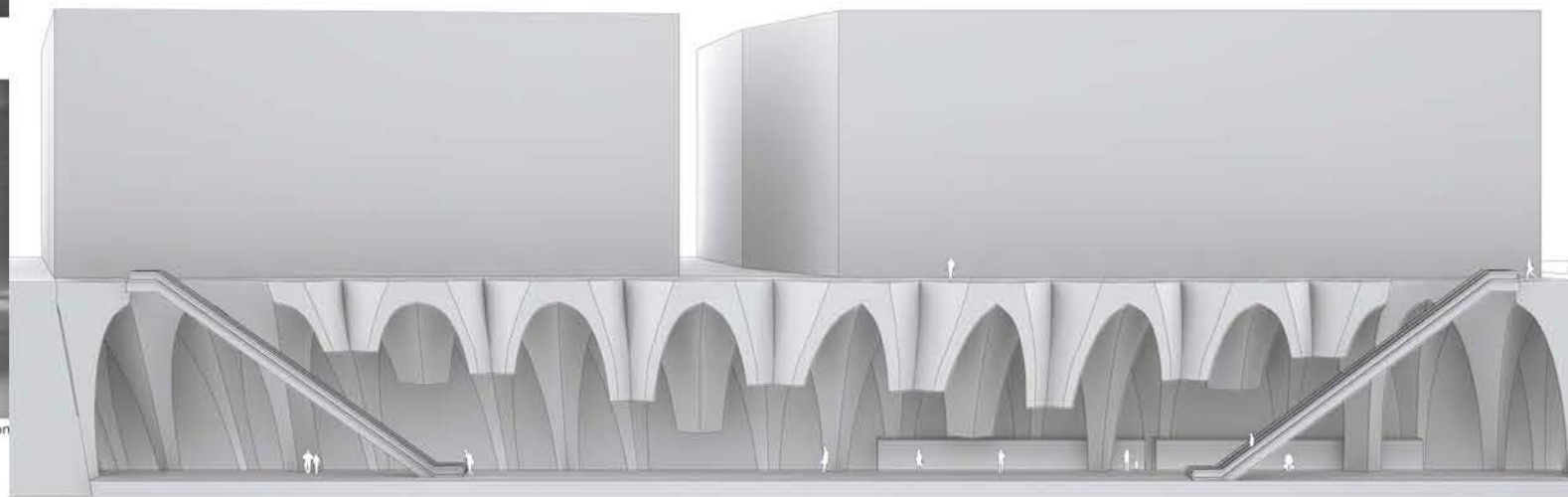


exterior and interior impression



interior impression

groundPlan 1\_500



section 1\_250