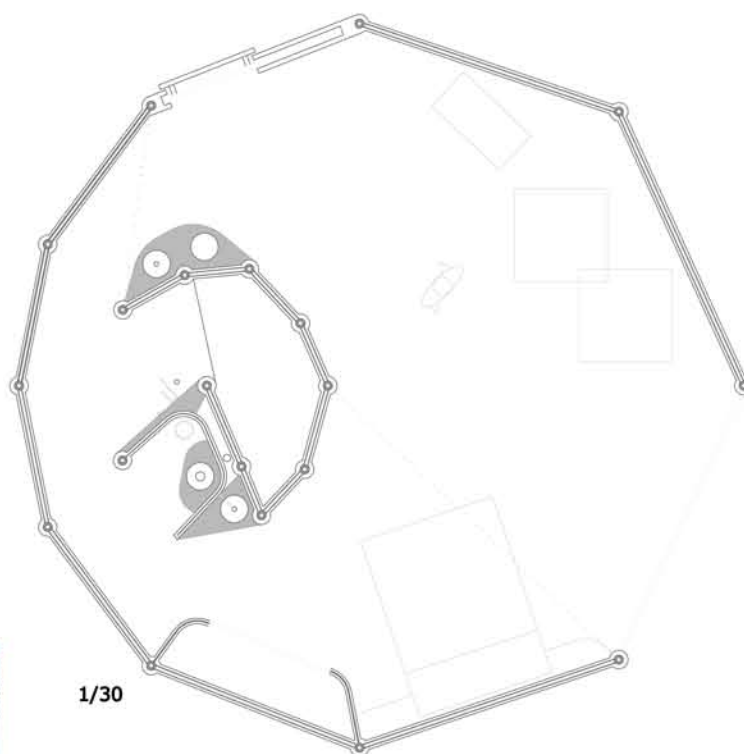


Las Palmas de Gran Canaria

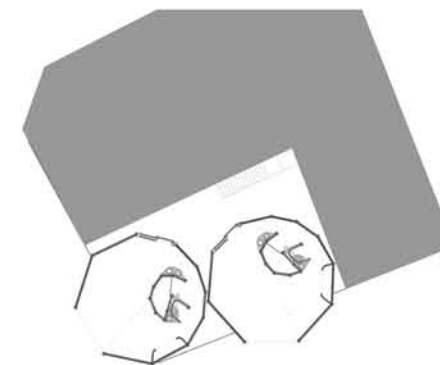


WHERE...?

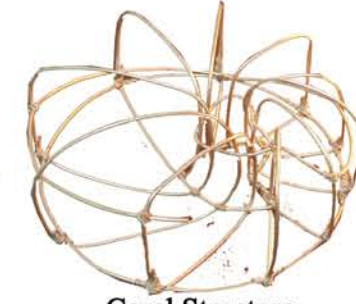
"La Puntilla" is one of the most important strategic locations on the "Las Canteras" beach. It operates as the hinge between landscape beach and rocky landscape. Hence, its undeniable link to ocean.



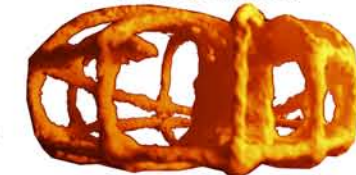
1/30



Wireline Steel Structure



Coral Structure



Foreign Skin

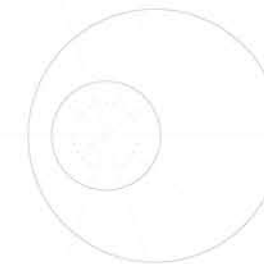


Fossilized Internal

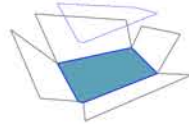


WHAT...?

The definition of housing unit of 40 m², is based on the geometrization of two circles decentres. The service area of the unit is in part compressed and the rest set a versatile space continuum



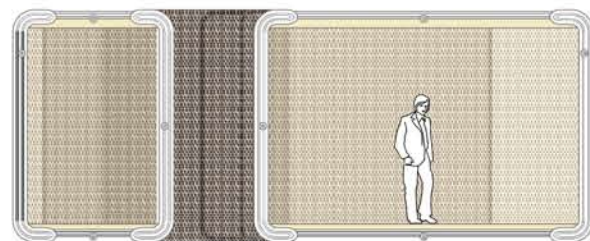
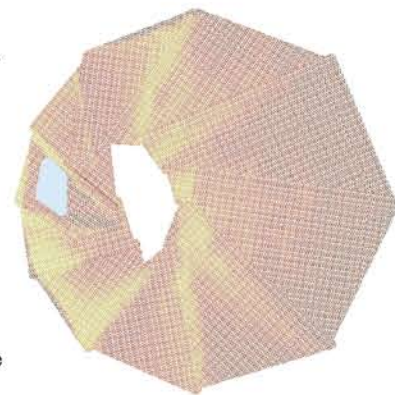
Inhabiting a portion of sea



The project idea is to live in a marine object. An object build under water (ecoystem submarine), but that is intended to be inhabited by people outside of the sea (human ecosystem).

The structure consists of 10 ribs that generate livable empty inside. These are linked through the closing, that unify the architectural object, and that they all work for skin.

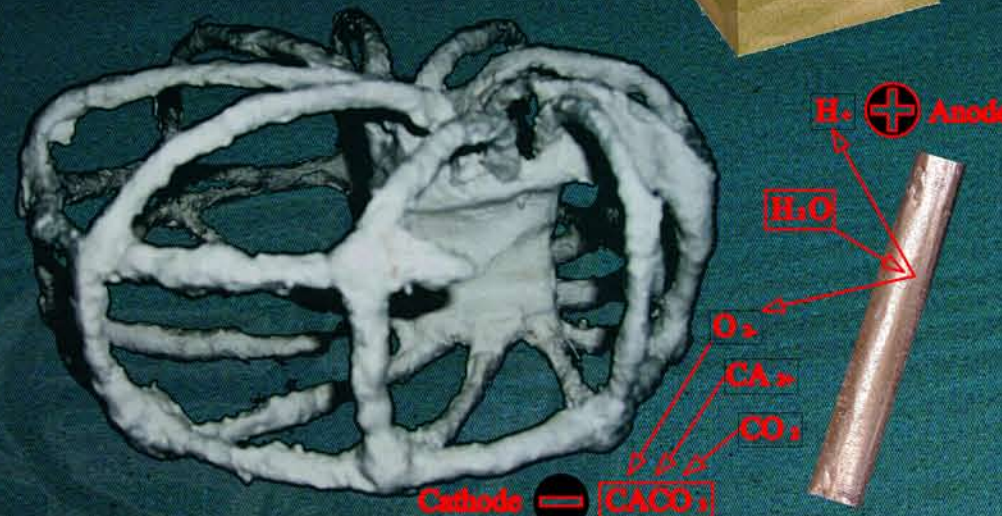
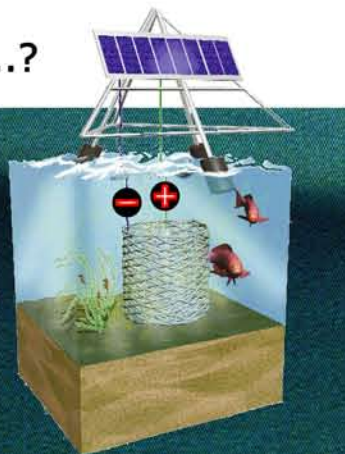
The organicity of the geometry comes from their own forms generated at sea, as the living unit purput to be faithful to constructive process under water.



HOW...?

Galvanic Corrosion is an electrochemical process in which one metal corrodes preferentially when in electrical contact with a different type of metal and both metals are immersed in an electrolyte. Conversely, a galvanic reaction is exploited in primary batteries to generate a voltage. When two or more different sorts of metal come into contact in the presence of an electrolyte a galvanic couple is set up as different metals have different electrode potentials.

When a positively charged and a negatively charged cathode are suspended in sea water with an electric current flowing between them, calcium ions combine with carbonate ions and adhere to the structure (cathode). The result is calcium carbonate (CaCO3).



Forms Sea



Model of Proof



Section (Steel-Calcium Carbonate)



Superficial Texture



WHY...?

Increasing the density, relying on the existing



WHO...?



WHEN...?

References cell minimum



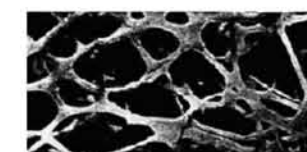
Jean-Louis Chaneac Cellules



Buckminster Fuller Dimaxion house



Pascal Hauserman Bulle de Grilly



Le Ricolais The art of building with holes



Frederick Kiesler Endless house



Jean Maneval Bulle a 6 coques