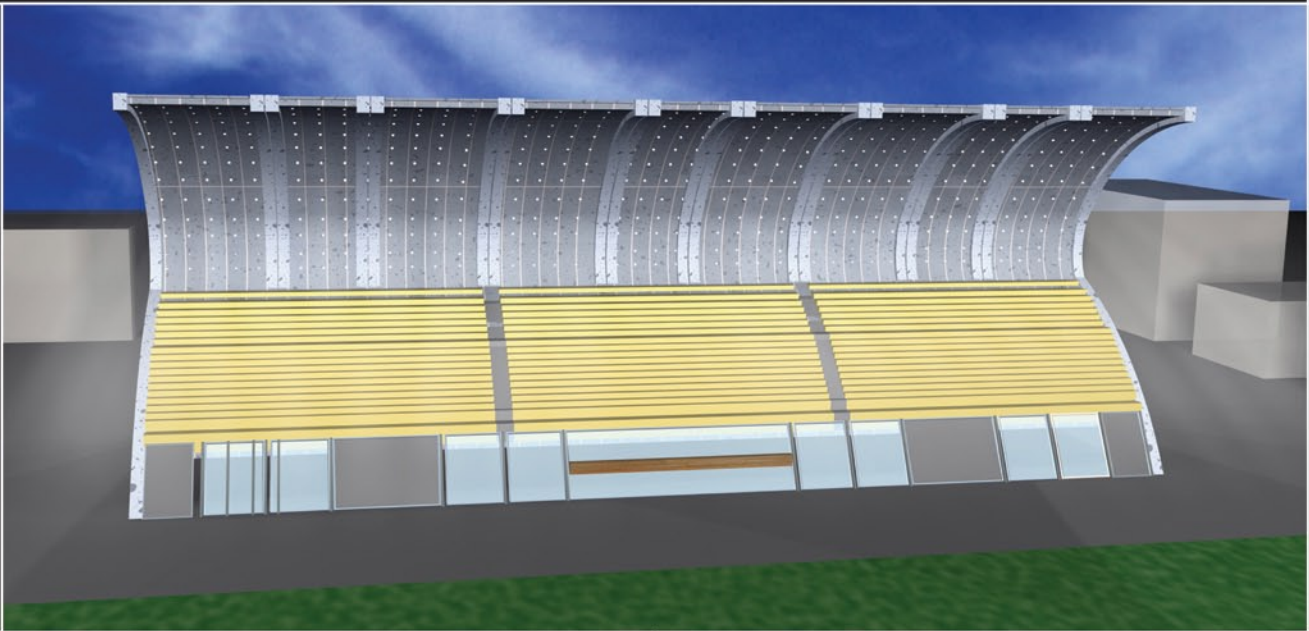
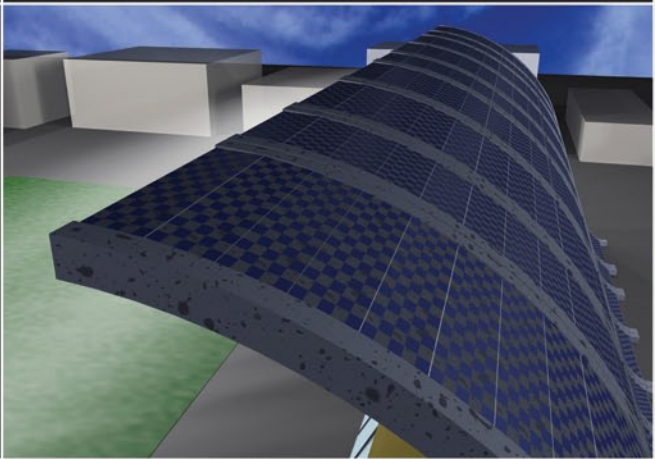


A TRIBUNE OF CONCRETE AS A TRIBUTE TO CONCRETE;  
SHELTERING, ILLIMUNATING, AESTHETIC



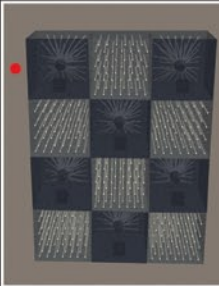
Choose environmentally friendly  
At night have sun beams instead of electricity

Imagine sophisticated, imagine formable  
Use simple elements of nature  
Get inspired from simplest  $\lambda$

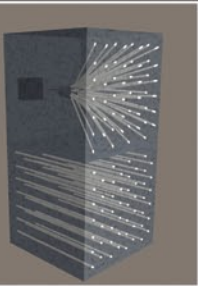


Precast high performance  
fiber-reinforced concrete panels

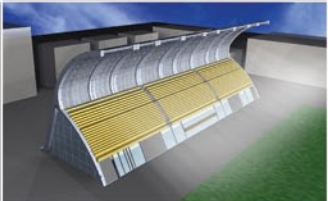
• Solar panels



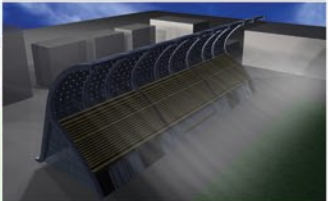
Solar panels symmetrically  
placed on concrete parts



Optical fibers  
pre-placed into moulds

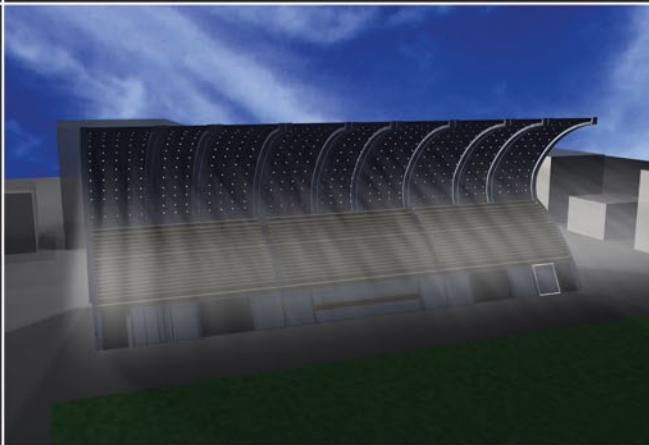


Daytime;  
Solar panels absorb sunlight  
Direct sunlight blocked  
Optical fibers transfer filtered  
sunlight



Night;  
Energy collected during  
daytime used for lightening  
Artificial sunlight transferred  
through optical fibers

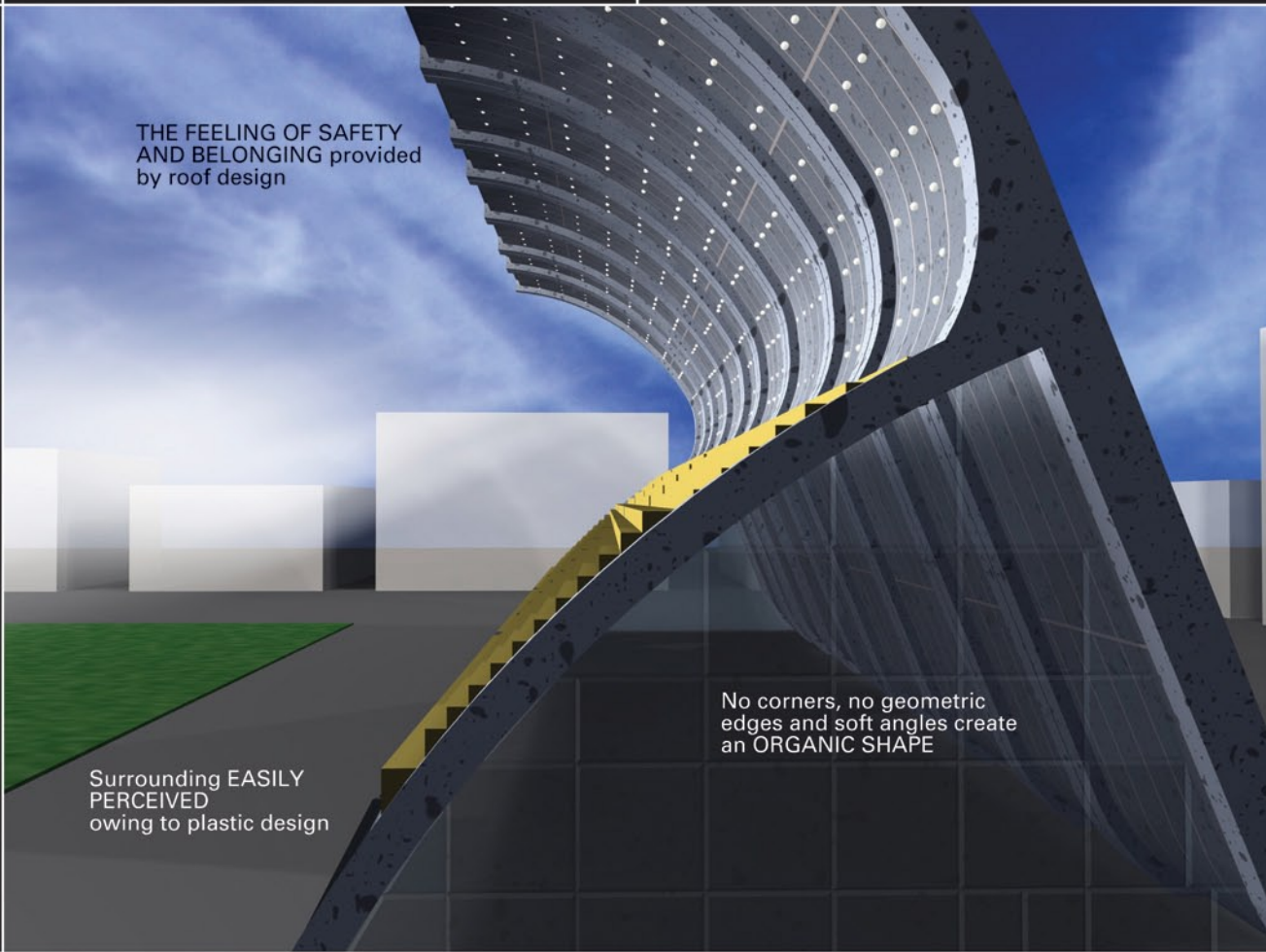
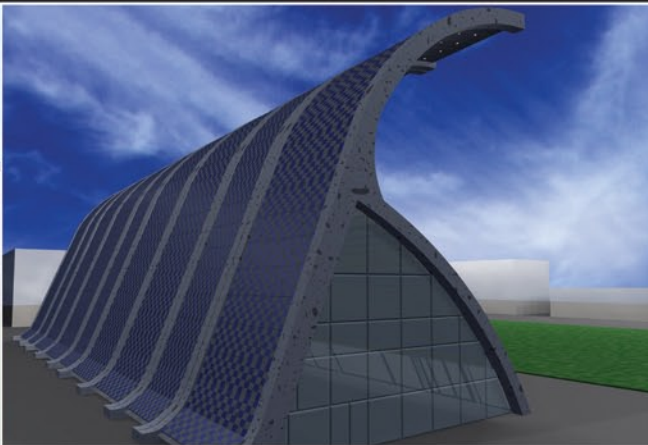
Makes the PLASTICITY a real thing rather than a concept



Opacity

FLUIDITY

Non-monotonous design



THE FEELING OF SAFETY  
AND BELONGING provided  
by roof design

Surrounding EASILY  
PERCEIVED  
owing to plastic design

No corners, no geometric  
edges and soft angles create  
an ORGANIC SHAPE

Neither plasticity nor opacity could have been thought individually. Lambda shape provides the most efficient use of opacity with its own plastic shape while offering a multipurpose public area.