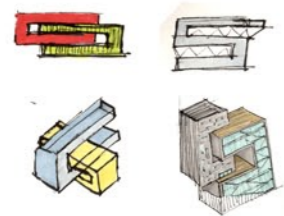


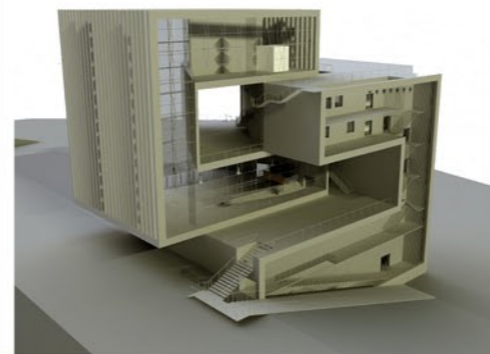
BE-187



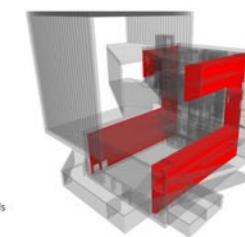
The idea for the cultural centre was to use its initials as basic form for the building. The opacity I tried to explore was not in the texturing but more in the use of existing concrete structures. By using plates in combination with walls it was possible to make open spaces in the building. These are considered as 'corridors' and create a dualism between in-and outside. The composition of plates and walls is a bit like Mondriaan's paintings and generates a fluid space.



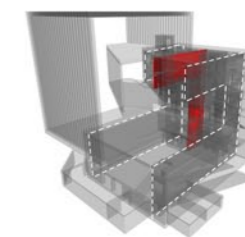
BE-187



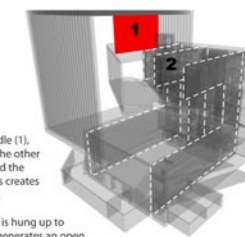
structure



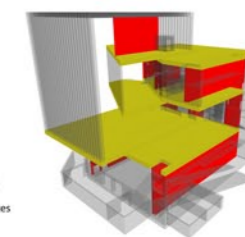
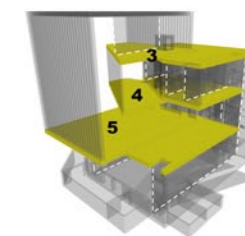
two walls on the extends



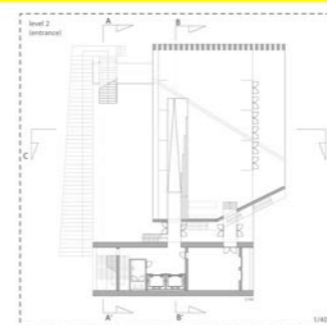
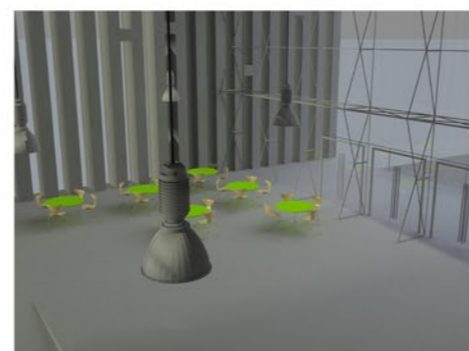
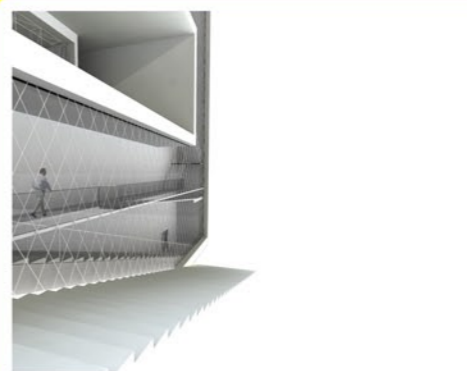
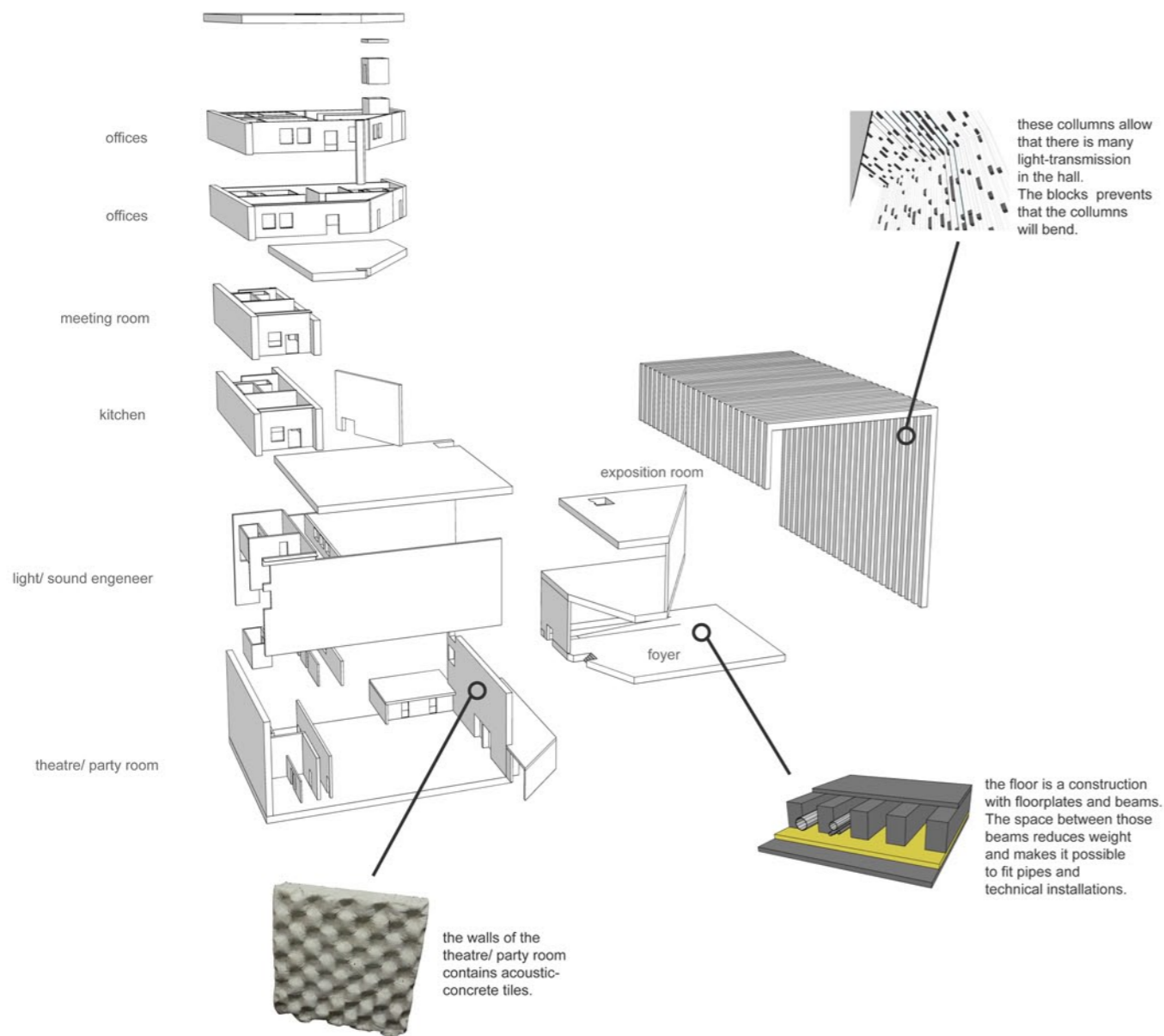
one wall in the middle



Another wall in the middle (1), who is connected with the other wall in the middle (2) and the horizontal plates (3). This creates an extension of the wall, but one level higher. The passage (4) under it is hung up to this vertical plate(1) an generates an open space (5) without columns on the level below.



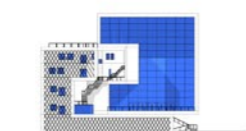
vertical plates
horizontal plates



back



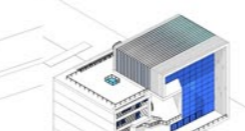
front



left side



raght side



isometric view 1



isometric view 2

