

RUINS

The aim of the project was to find a solution to secure and preserve the ruins of the castle Hohenlandin with the help of Infralightconcrete.

The castle is located in Landin in the Uckermark, an area northeast of Berlin close to the Polish border. The area is economically underdeveloped and therefore the castle is in a desolate state of repair. Both the roof covering and the floor slabs are missing, also the walls are crumbling and in danger of collapsing.

The design proposes a skeleton of Infralightconcrete to preserve the ruin and to avoid a further dilapidation. Because of the structural capabilities of the material it is shaped in arcs in order to avoid tensional load. Due to its insulating qualities later individual areas of the skeleton can be thermally activated. Therefore prefabricated wooden window frames and wooden joist floors are inserted. This allows the gradual start-up of the structure while it already guaran-

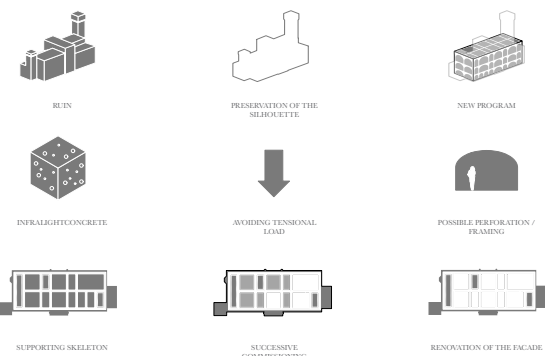
ties the structural security of the castle.

For the use of the building it is planned to put a conference center in the two lower floors because of Hohenlandins good location between Berlin and Poland. The upper floor will be used for housing to guarantee a realistic financial background for the project in this economically underdeveloped area.

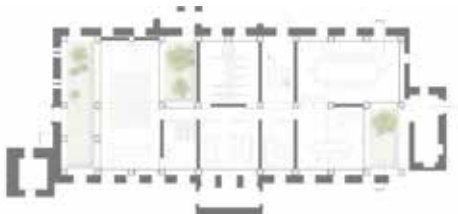
Inside the ruin there are some special situations which were created over the years with plants growing inside and unique spatial moments. The skeleton allows to preserve and conserve these areas inside the building as they are.

The new structure is barely visible from the outside but still readable. At the same time it supports the ruin from the inside and frames it simultaneously. The skeleton defines the new floor heights of the building using the existing openings, projections and even the damaged parts.

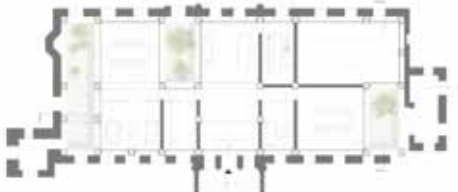
The meeting of the asymmetric construction of the castle and the severity of the skeleton creates a special tension in the dialogue between ruin and intervention.



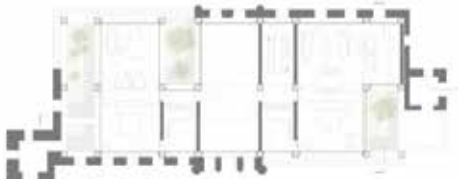
CONCEPT



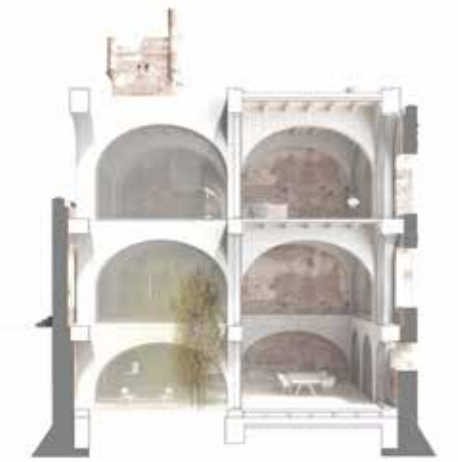
FLOORPLAN / BASEMENT



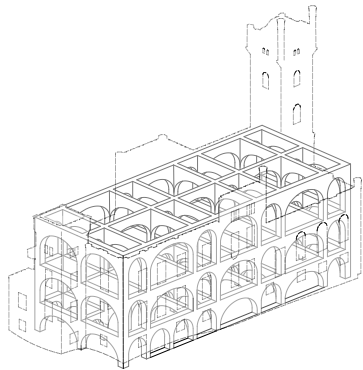
FLOORPLAN / GROUND FLOOR



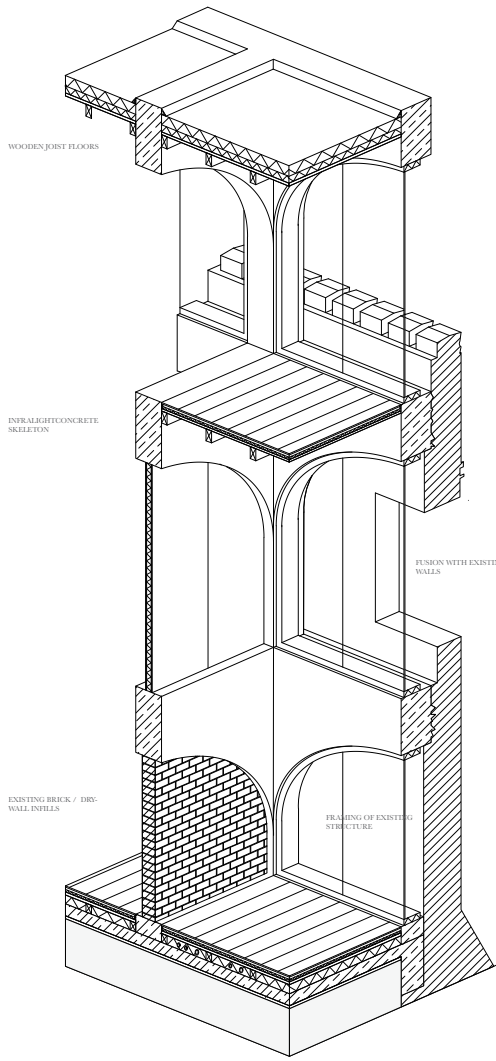
FLOORPLAN 1st FLOOR



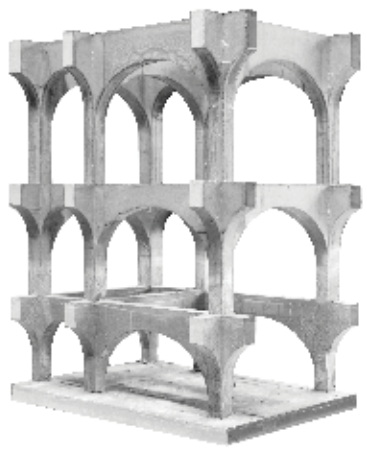
PERSPECTIVE SECTION



AXONOMETRY



AXONOMETRICAL SECTION



MODEL