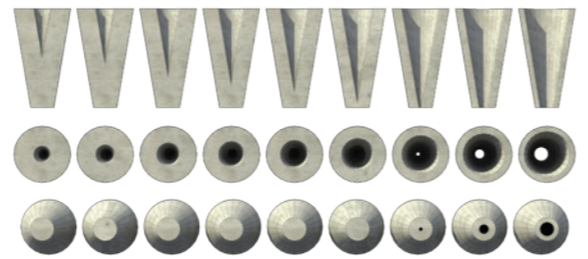
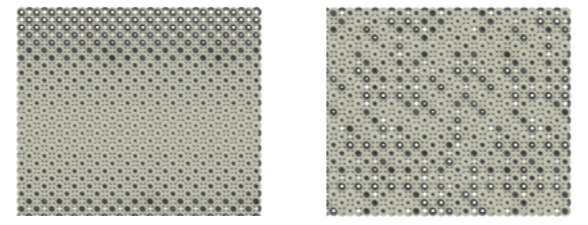


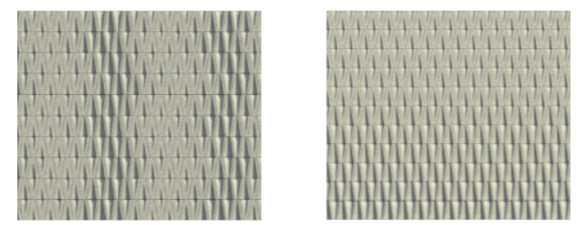
CC005



1. Variety of Cones



2. Possible roof variants.



3. Possible facade variants.

CC005



8. The Sand is brushed out and leaves recessed seams. The sand leaves a texture to the seams in contrast to the smooth concrete Cones.



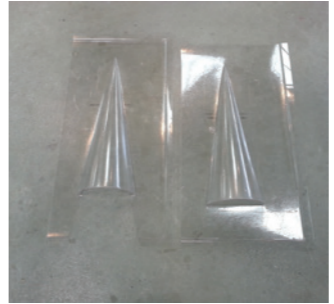
4 Section, corner detail.



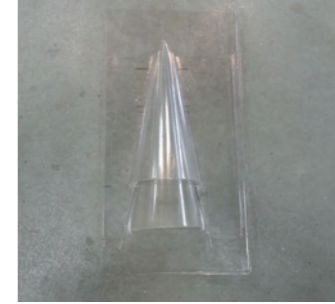
5 Section, facade to roof detail.



1. Wooden Cone, made on a bench lathe.



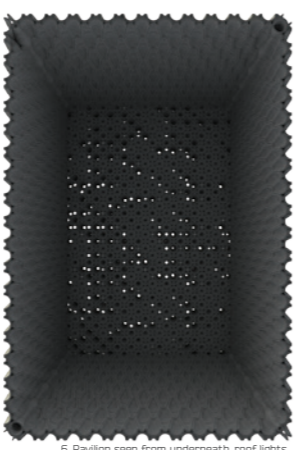
2. Hot plastic vacuumed over wooden Cone.



3. Molds cut, waxed and taped together. Bottom sealed with removable glue (for next use).



4. Molds Filled with fiber reinforced concrete.



6. Pavilion seen from underneath, roof lights.



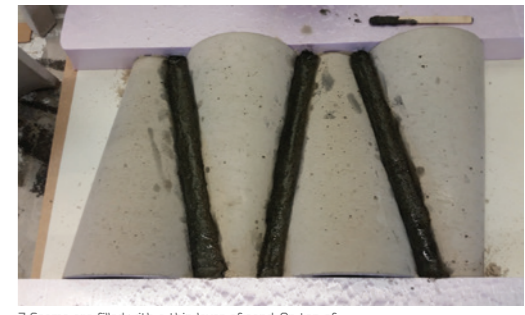
7. Facade close up.



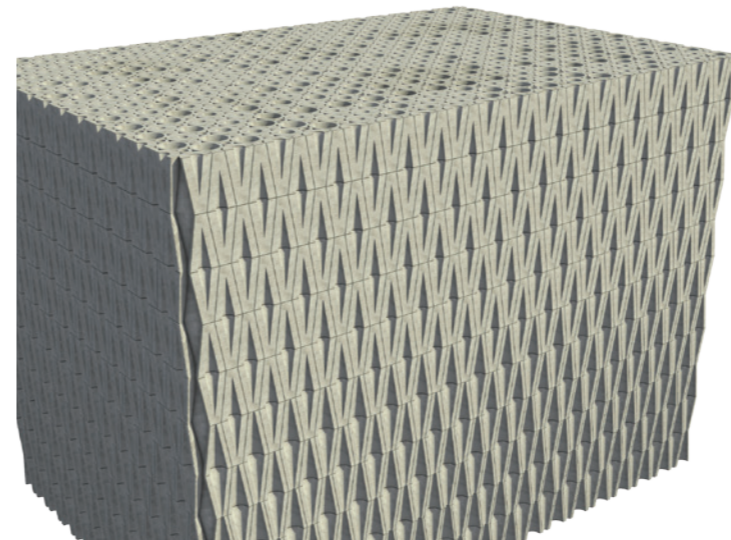
5. When tape is removed the Cone is taken out easily due to the applied wax.



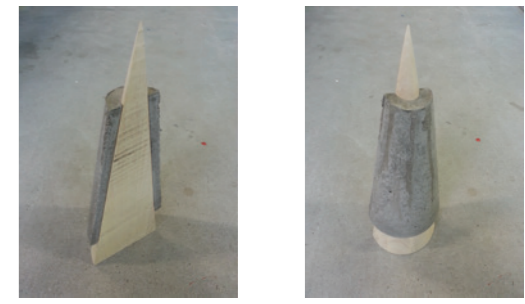
6. Preparing for pouring seams.



7. Seams are filled with a thin layer of sand. On top of that pigmented concrete is poured.



Desire to Inspire
The Concrete Cone is based on the desire to create a simple element that offers many possibilities. To refine, inspire and stimulate an esthetic approach of using concrete. The process seen in picture 7. can be used to make prefab elements of arranged cones. The sand and foam can be replaced with a rubber mold.



Concrete¹
Cones

Concrete²
Cones