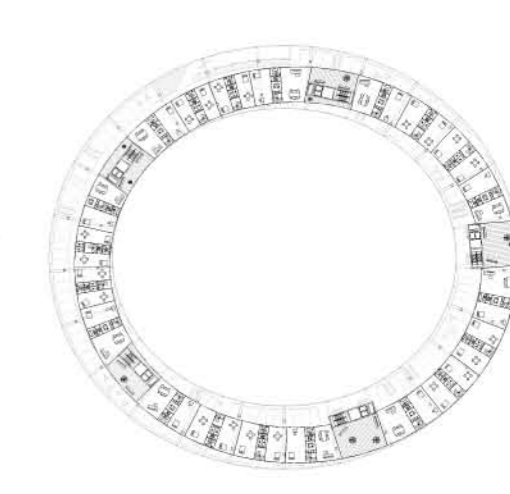
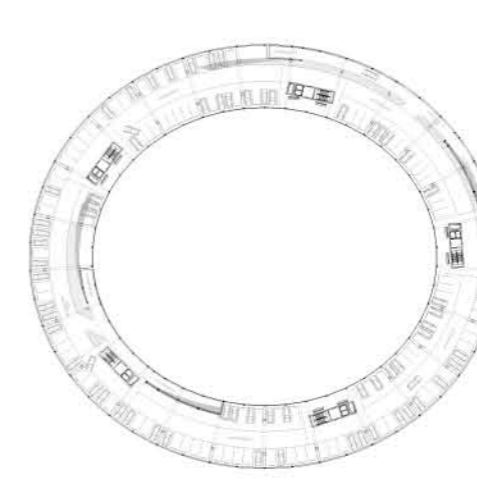
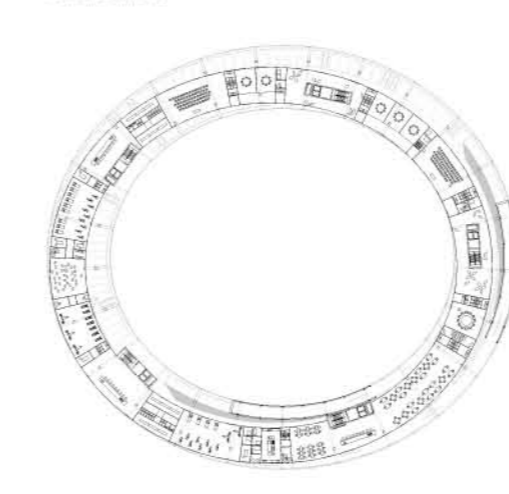
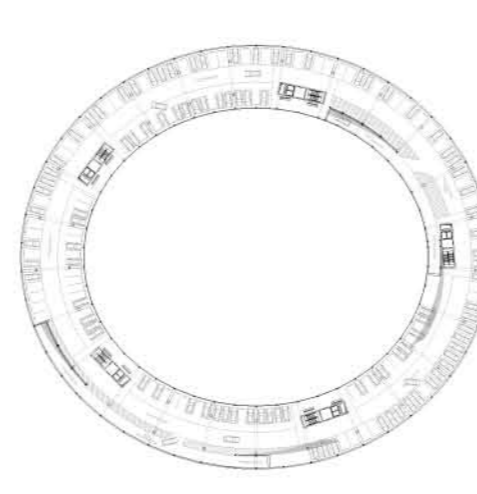
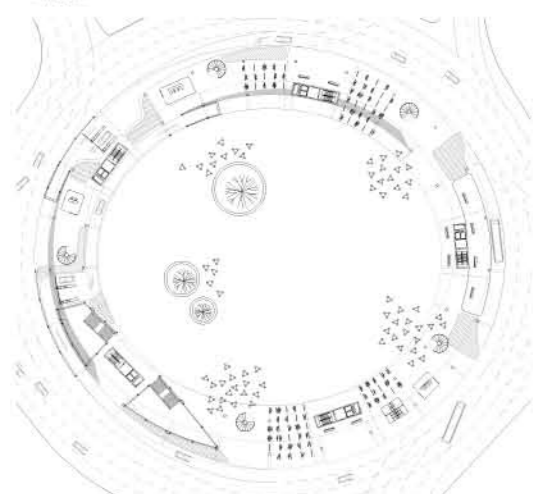




wide angle view

view on the new Ernst-Reuter-Platz



ground floor - M 1:750

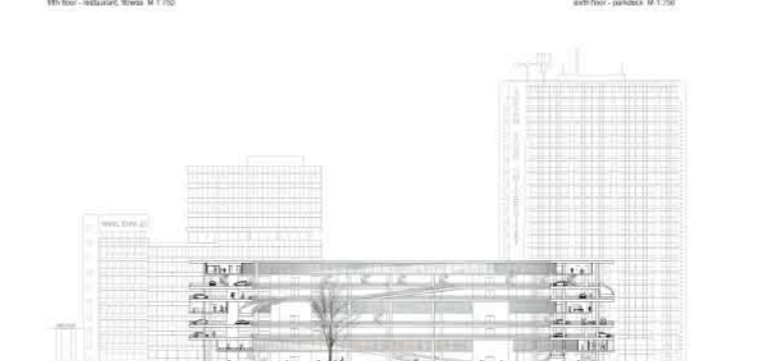
second floor - mat - M 1:750

third floor - parking - M 1:750

fifth floor - restaurant, fitness - M 1:750

sixth floor - parking - M 1:750

eighth floor - apartments - M 1:750



The Ernst-Reuter-Platz in Berlin Charlottenburg is an urban roundabout with a diameter of 130 m, located initially as a branch on the baroque axis between the Stadtschloss and Götterhaus Charlottenburg, the present form results from an urban design competition in 1995. Designed as a product of its time, for the car-friendly city, the Ernst-Reuter-Platz is from today's perspective an unused urban space, without any qualities in the city. At this place and in an area north and south of the adjoining Strasse des 17. Juni is a large area, the Campus Charlottenburg, with facilities of the Technical University and the University of Arts Berlin.

These two parameters, University and traffic, determine the concept.

In the picture of the city one of the largest universities in Europe is not visible to passers-by. Left and right of the streets are huge areas for parking cars, a continuous campus experience is currently not existing. Our aim was therefore to give back the vast area, which is occupied at the moment of parked cars, to the university and therefore the students, teachers, professors and their staff as well as visitors and thereby create space for recreation and interdisciplinary exchange outside of the individual institutions.

The building as a hub and a center of gravity of Campus Charlottenburg.

The Ernst-Reuter-Platz as a HUB, becomes destination and transit point. The previously all over the campus scattered arrival and departure facilities to university and in the individual districts of Berlin are concentrated in this one place. Buses, subway, cars, cyclists and pedestrians come together at one place, which invites you stay or to pass by for a first and last part of call in the day.

The structure of the building is related to the typology of a parking garage.

In the area of the campus Charlottenburg are about 700 parked vehicles a day, this was for us the crucial maximum number of vehicles to put in the building. In itself this created really the dimensions of the building. The diameter is oriented towards the outer edge of the current Ernst-Reuter-Platz.

Sustainability through flexible space structure and permanence.

The simple design of the reinforced concrete structure and the oversized props of the columns relies on the permanence and the flexible use of the building changing over the time. This allows the building to handle new situations flexibly, spaces can be changed, added or removed.

Also regarded to the changing mobility the building can be converted and is flexible with different needs, therefore the typology of the parking garage as a HUB with multifunctional uses is future-oriented, in terms of electric mobility and increasing public transport.

With the choice of materials we have consciously decided to use concrete, because the two- and three-dimensional potential of concrete lies in the fact that the structure, the texture and the surface can be formed various and can be treated highly complex. Conceptually this material underlines the permanence, as concrete is often associated with a certain claim to eternity. The aesthetics and the prefabrication of the individual components is another advantage.

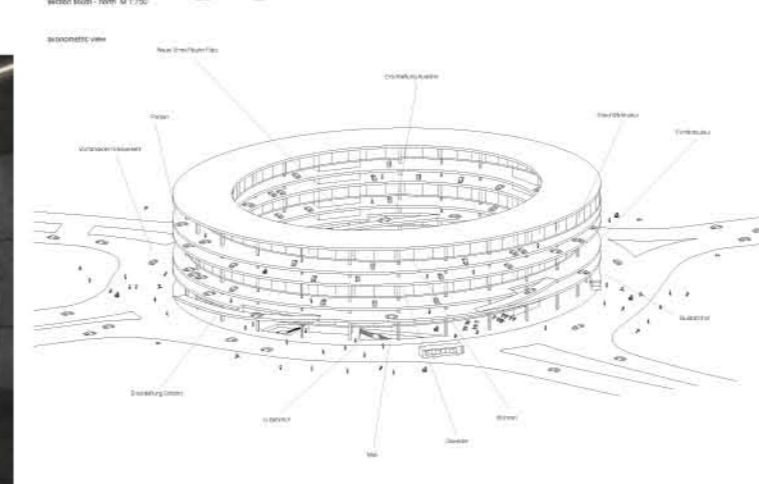
Ernst-Reuter-Platz as a multifunctional urban space In the middle of the building.

By the oval ring shape we have created a new place in the middle of our building, which will be used in various ways. On normal days as an urban space as a place for markets and various events such as open-air festivals, outdoor theater and concerts.

The Campus Charlottenburg has a visible sign in the city and a place where the university as a place of social life can be represented towards the city and their people.

section south - north - M 1:750

section south - north - M 1:750



campus M 1:5000

view on a parking

perspective view

perspective view