



WARM UP SEAT FOR YOU

The project is located on the old site of the Killilagh church near Doolin town. Main idea was to create man made seating to acomodate the visiting tourist during their hicking break and just to warm up for their way to the rest of the Burren sites.

The main potential of the concrete element is its ability to store heat trough water, and then slowly release it in the cold climate providing comfort to its user.

Having the main funtion of colleting heat from the Sun

Because of watters phisycal abilities to store heat and release it, it is the perfect insulation for the concrete element. Like an alcaline batery without any potential of polution. In structural context, the weater container will be protected from corosion with a small layer of film and organic based chemicals to reduce the freezing levels



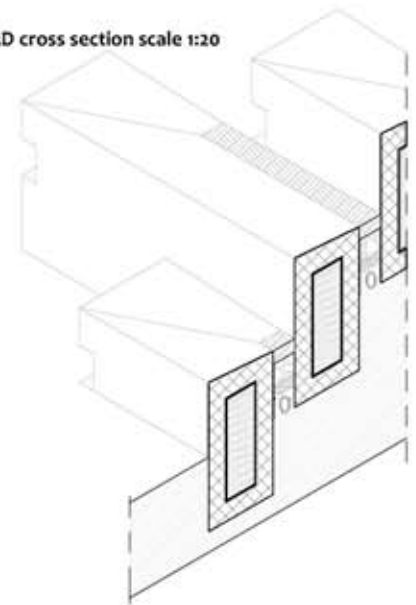
+



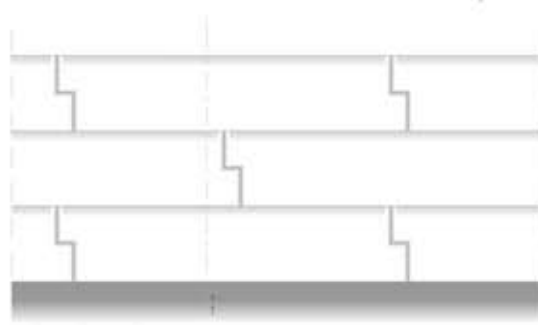
=



3D cross section scale 1:20



Plan scale 1:20



Elevation scale 1:20

BM / 351